

Flora of kurgans in the Pontic herb(-rich) grass steppe zone in Ukraine

IVAN IVANOVICH MOYSIYENKO
BARBARA SUDNIK-WÓJCIKOWSKA

Мойсієнко І.І., Суднік-Войциковська Б., 2009: **Флора курганів зони різнотравно- та багаторізнотравно-злакових степів в Україні.** *Чорноморськ. бот. ж.*, т. 5, N 3: 333-369.

Представлені результати дослідження флористичного багатства курганів в зоні різнотравно- та багаторізнотравно-злакових степів (згідно з MAP OF THE NATURAL VEGETATION OF EUROPE 2000: «the west and central Pontic herb-grass steppe» (M5) та «west and central Pontic herb-rich grass steppe» (M1) зони) в Миколаївській та Кіровоградській областях. Вивчено 29 курганів понад 3 м. заввишки, що розташовані на території понад 9000 км². Досліджена флора курганів за кількістю видів переважає флору курганів зон злакових та пустельних степів і налічує 439 видів. Кількість видів на одному кургані змінюється від 89 до 171 (середня 125,5). В зоні різнотравно- та багаторізнотравно-злакових степів переважають гемікриптофіти, на відміну від флор курганів зон, що розташовані південніше, де переважають терофіти. Також більш чисельними виявились тут фанерофіти (8,7 %). Короткоживучі рослини (одно-, дво-, трирічні монокарпіки) складають 35,1 % флори. Більшість з них є синантропними видами, переважно бур'яни з оточуючих полів. Загалом на курганах виявлено 113 видів адвентивних рослин. Археофіти та кенофіти складають 23,5 % флори курганів.

В цілому на досліджених курганах було зафіксовано 19 синтаксонів вищого рангу. Види, що асоційовані з степовими синтаксонами: *Festuco-Brometea*, *Festucetea vaginatae*, *Polygono-Artemisietea* та *Galietales veri* є найчисельнішими і складають 49,9 % флори курганів. Як і у флорі курганів злакових та пустельних степів домінують види класів *Festuco-Brometea* та *Stellarietea mediae*, що підкреслює напівприродний характер флори курганів. Виявлено низку раритетних видів рослин: *Adonis vernalis*, *Amygdalus nana*, *Anemone sylvestris*, *Astragalus dasyanthus*, *Crocus reticulatus*, *Elytrigia stipifolia*, *Galium volhynicum*, *Goniolimon tataricum*, *Hesperis tristis*, *Iris halophila*, *Limonium platyphyllum*, *Linaria beibersteinii*, *Ornithogalum kochii*, *Phlomis hybrida*, *Stipa capillata*, *S. lessingiana*. Кургани зони різнотравно- та багаторізнотравно-злакових степів, як і інших зон виступають рефугіумами степової флори. Вони досить рівномірно розташовані в степовій зоні і відіграють важливу роль в локальному відновленні природної рослинності, тому повинні охоронятися не лише як археологічні, а і як природні пам'ятки.

Ключові слова: кургани, рефугіум степової флори, флористичне різноманіття, Понтичний різнотравно-злаковий та багаторізнотравно-злаковий степ, охорона курганів, південь України.

MOYSIYENKO I.I., SUDNIK-WÓJCIKOWSKA B., 2009: **Flora of kurgans in the Pontic herb(-rich) grass steppe zone in Ukraine.** *Chornomorsk. bot. z.*, vol. 5, N 3: 333-369.

The results of study of floristic diversity of kurgans in the Pontic herb(-rich) grass steppe zone (according to MAP OF THE NATURAL VEGETATION OF EUROPE 2000: the west and central Pontic herb-grass steppe (M5) and west and central Pontic herb-rich grass steppe (M1) zones) in Mykolaiv and Kirovograd Regions, are presented. Twenty-nine kurgans higher than 3 m, distributed over an area approx. 9000 km², were surveyed. The investigated kurgan flora contains more species than the flora of the barrows in the west Pontic grass steppe and desert steppe zones, being estimated at 439 species. The number of species on a single kurgan varied from 89 to 171 with 125,5 on average. Hemicryptophytes dominated in the kurgan flora (38,8%) of the Pontic herb(-rich) grass steppe zone, whereas therophytes prevailed in barrow flora in the steppe zones southwards. Phanerophytes were more numerous as well (8,7%).

(Annuals and biennials constituted 35,1% of the kurgan flora. Most of them are synanthropic species, e.g. weeds derived from the surrounding fields. The total number of alien species (anthropophytes) reached 113. Archaeophytes and kenophytes comprised 23,5% of the kurgan flora.

A total of 19 syntaxa of higher rank were represented in all the kurgans studied. Species associated with steppe syntaxa such as *Festuco-Brometea*, *Festucetea vaginatae*, *Polygono-Artemisietea* and *Galietales veri* comprised as much as 49,9 % of the kurgan flora. As in the case of the desert and grass steppes, species belonging to classes *Festuco-Brometea* and *Stellarietea mediae* were predominant in the herb rich grass steppe, which also confirmed the semi-natural character of the kurgan flora. The species of particularly high floristic value were: *Adonis vernalis*, *Amygdalus nana*, *Anemone sylvestris*, *Astragalus dasyanthus*, *Crocus reticulatus*, *Elytrigia stipifolia*, *Galium volhynicum*, *Goniolimon tataricum*, *Hesperis tristis*, *Iris halophila*, *Limonium platyphyllum*, *Linaria biebersteinii*, *Ornithogalum kochii*, *Phlomis hybrida*, *Stipa capillata*, *S. lessingiana*. The investigations carried out in the Pontic herb(-rich) grass steppe zone confirm that kurgans constitute refugia for the steppe flora. They are more or less uniformly distributed in the steppe zone, and could play an important role in the local restoration of the natural plant cover. Therefore, they should be put under protection as archeological and nature monuments.

Key words: barrows, refugia of steppe flora, floristic diversity, herb-grass steppe, herb-rich grass steppe, protection of kurgans, the South of Ukraine.

МОЙСИЕНКО И.И., СУДНИК-ВОЙЦИКОВСКАЯ Б., 2009: **Флора курганов зоны разнотравно- и богаторазнотравно-злаковых степей в Украине.** *Черноморск. бот. ж.*, т. 5, N 3: 333-369.

Представлены результаты исследования флористического богатства курганов в зоне разнотравно- и богаторазнотравно-злаковых степей (согласно с MAP OF THE NATURAL VEGETATION OF EUROPE 2000: «the west and central Pontic herb-grass steppe» (M5) и «west and central Pontic herb-rich grass steppe» (M1) зоны) в Николаевской и Кировоградской областях. Изучено 29 курганов более 3 м. высотой, которые расположены на территории свыше 9000 км². Исследованная флора курганов по количеству видов преобладает над флорой курганов зоны злаковых и пустынных степей и насчитывает 439 видов. Количество видов на одном кургане изменяется от 89 до 171 (в среднем 125,5). В зоне разнотравно- и богаторазнотравно-злаковых степей преобладают гемикриптофиты, в отличии от флор курганов зон расположенных южнее, где преобладают терофиты. Также более многочисленными оказались тут фанерофиты (8,7 %). Краткоживущие растения (одно-, дво-, многолетние монокарпики) составляют 35,1 % флоры. Большинство из них являются синантропными видами, преимущественно сорняками с прилегающих полей. Всего на курганах выявлено 113 видов адвентивных растений. Археофиты и кенофиты составляют 23,5 % флоры курганов.

В целом на исследованных курганах было зафиксировано растения 19 синтаксонов высшего ранга. Виды ассоциированные со степными синтаксонами: *Festuco-Brometea*, *Festucetea vaginatae*, *Polygono-Artemisietea* и *Galietales veri* являются наиболее многочисленными и составляют 49,9 % флоры курганов. Как и во флоре курганов злаковых и пустынных степей доминируют виды класов *Festuco-Brometea* и *Stellarietea mediae*, что подчеркивает полустественный характер флоры курганов. Выявлено ряд созофитов: *Adonis vernalis*, *Amygdalus nana*, *Anemone sylvestris*, *Astragalus dasyanthus*, *Crocus reticulatus*, *Elytrigia stipifolia*, *Galium volhynicum*, *Goniolimon tataricum*, *Hesperis tristis*, *Iris halophila*, *Limonium platyphyllum*, *Linaria biebersteinii*, *Ornithogalum kochii*, *Phlomis hybrida*, *Stipa capillata*, *S. lessingiana*. Курганы зоны разнотравно- и богаторазнотравно-злаковых степей, как и других зон выступают рефугиумами степной флоры. Они достаточно равномерно расположены в степной зоне и играют важную роль в локальном восстановлении природной растительности, поэтому, должны охраняться не только как археологические памятники, но и как природные.

Ключевые слова: курганы, рефугиум степной флоры, флористическое разнообразие, Понтийская разнотравно-злаковая и богаторазнотравно-злаковая степь, охрана курганов, юг Украины.

Introduction

The present work continues the series of publications dealing with the biodiversity of flora of kurgans in the steppe zone of southern Ukraine. Earlier papers [МОЙСИЙЕНКО, СУДНИК-ВÓJCIKOWSKA 2006А, 2006В, 2006С, СУДНИК-ВÓJCIKOWSKA, МОЙСИЙЕНКО 2006, 2008] were concerned with the flora of kurgans located southwards: desert (*west and central Pontic*) steppe zone and grass steppe zone – „bednoye raznotravie” (*west Pontic grass steppe zone*).

The aim of this study was to assess the richness and specific character of the flora of kurgans within the steppe zone which is commonly referred to as the grass steppe zone - „bogatoye razotravie”. Due to its high quality soils the above mentioned area has been utilized agriculturally for a long time. The steppe grasslands have survived only as small fragments, e.g. in balkas, river valleys and in nature reserves. Within the investigated area there are some valuable reserves, such as „Jelaniecki Step” and „Granitove Pobuzhzhya”. As in the case of the other zones, the kurgans in the above mentioned zone are an interesting habitat in terms of the steppe flora.

Study area

The area surveyed is located in the southern part of Dniepr Highland, in the Mykolaiv and Kirovograd Regions. The investigated kurgans are distributed over an area of about 9000 km² in the northern part of the proper grass steppe zone. Traditionally, the true (proper) grass steppe zone is divided into two subzones: grass and herb-grass steppes (in ukr./russ.: підзони типчакowo-ковилових/злакових та різнотравно-типчакowo-ковилових/разнотравно- и богаторазнотравнозлакових степей [БЛИК, 1973, ЛАВРЕНКО и др., 1991]). According to the nomenclature proposed by BOHN et al. [2000] (*Map of the natural vegetation of Europe*) the true grass steppe zone is divided into two parts: the southernmost west Pontic grass steppe zone (M12), and the northern “bogatoye raznotravie” which is divided into two subzones: west and central Pontic herb-grass steppe (zone M5) and west and central Pontic herb-rich grass steppe (zone M1). In the present work we adopted the traditional classification system of steppes. The above two subzones were treated as one zone which we referred to as the Pontic herb(-rich) grass steppe zone. In Europe it stretches as a narrow strip from south-west to north-east. The zone extends from Romania (Dobruja) and Moldova through Podolian Highland, up to Dnieper and Azovian Highland, Donez hilly country and lower courses of the Don river to the southern part of Ural. In Asia this steppe lies along the parallel of latitude extending from the southern part of West Siberia to Kazakhstan and Altai. It borders the forest-steppe zone on the north [ЛАВРЕНКО и др., 1991].

The landscape is dominated by a plateau (usually not higher than 200 m a.s.l.) which is crisscrossed by numerous valleys and ravines. The area is distinguished by low elevation topography, usually up to 300-500 m a.s.l. (e.g. Donetsk Hilly Country, Central Russian Highlands, Volgian and Stavropol' Highlands). Eolian and fluvial sediments dominate with outcrops of crystalline rocks, sandstone or limestone (Cretaceous sediments in the basement). The soils are mainly moderately dry, meso- or mesoeutrophic, humic chernozem and chernozem variants with a thick humus layer. The area includes typical steppes located in watersheds with well-developed as well as their edaphic variants: petrophytic and psammophytic steppes. The petrophytic steppes occur along river banks and balkas, in the outcrops of crystalline rocks (e.g. granite, gneiss) or sedimentary rocks (e.g. limestone, chalk, marl, sandstone). The psammophytic steppe is associated with sandy river terraces. However, saline soils are less frequently encountered. Solonchak- and solonetz soils occur locally on river terraces [МАРИНИЧ и др., 1985; ПРИРОДА УКРАИНСКОЙ ССР. ПОЧВЫ, 1986].

The zone is characterized by moderately continental and adequately dry climate, with eastern dry winds and frequent droughts. The climate becomes more continental in type from west to east. The average annual temperature ranges from 10-12⁰C in the west to 7-8⁰C in the east. The average temperature of the warmest month (July) is 20-23⁰C (absolute maximum: 40⁰C). The average temperature of the coolest month (January) is -9 – -4⁰C (absolute minimum: -38⁰C). The average annual precipitation varies between 350 and 520 mm, local rainfall is higher, e.g. in Donetz Hilly – 540 mm, and in Stavropol' Highlands – even more than 800 mm. North-eastern winds prevail. In summer the area is often characterized by periods of drought and „sukhoviyey” winds prevail. Occasionally dust storms are noted [МАРИНИЧ и др., 1985. ПРИРОДА УКРАИНСКОЙ ССР. КЛИМАТ, 1984].

The herb(-rich) grass steppe zone is characterized by the presence of forests in balkas. The southern border of the zone is marked by forests of the above type. These types of forests are not found further south (in the southern part of grass steppe zone). In the zone located north of the herb(-rich) grass steppe zone, the forests occur not only in balkas but also in flat, open areas (“plakorje”).

The Pontic herb(-rich) grass steppe zone can be distinguished from the other vegetation types occurring southwards by a smaller contribution of tuft grasses and, therefore, higher representation of perennial dicotyledonous plants and shrub communities. A higher number of species and increased biomass per unit area are observed. However, ephemerals and ephemerooids play a less significant role here. The moss and lichen layer is usually poorly developed.

A total of 29 kurgans (R1-R29) were investigated: 16 (R1-R15) were located in the west and central Pontic herb-grass steppe zone (M5) and 13 (R16-R18-29) in the west and central Pontic herb-rich grass steppe zone (M1); Fig. 1. Due to problems in establishing the location of the kurgans on archaeological and physical-geographical maps, GPS was used to locate the barrows (Table 1).

Material and methods

In the present work the same methods as those used in an earlier study [MOYSIYENKO, SUDNIK-WÓJCIKOWSKA 2006A, 2006B] were applied. The following criteria were used to select the 29 kurgans:

- kurgans more than 3 m high were chosen;
- good state of preservation of kurgans;
- the state of preservation of the plant cover; it was assumed that the presence of typical steppe species, such tuft grasses as *Festuca valesiaca*, *Koeleria cristata* and *Stipa capillata*, was indicative of a relatively good condition of plant cover.

The flora of 5 microhabitats within 29 kurgans was investigated. The data were compiled in a table (Appendix 1) which contained the following additional information about each taxon: its occurrence and abundance in particular microhabitats within the kurgans investigated, species life form, its status in the historical-geographical classification, and origin in the case of alien species. Floristic analysis was conducted and the specific character of the kurgan flora within the Pontic herb(-rich) grass steppe zone was determined. A five-grade scale was used to assess the frequency category of the species (see Fig. 3). Special attention was paid to the proportion of short living plants and alien species in the kurgan flora.

The species nomenclature follows S. MOSYAKIN, M. FEDORONCHUK [1999], Latin names of syntaxa are given according to B. СОЛОМАХА [1996], Б. МІРКІН, Л. НАУМОВА [1998], and W. MATUSZKIEWICZ [2001].

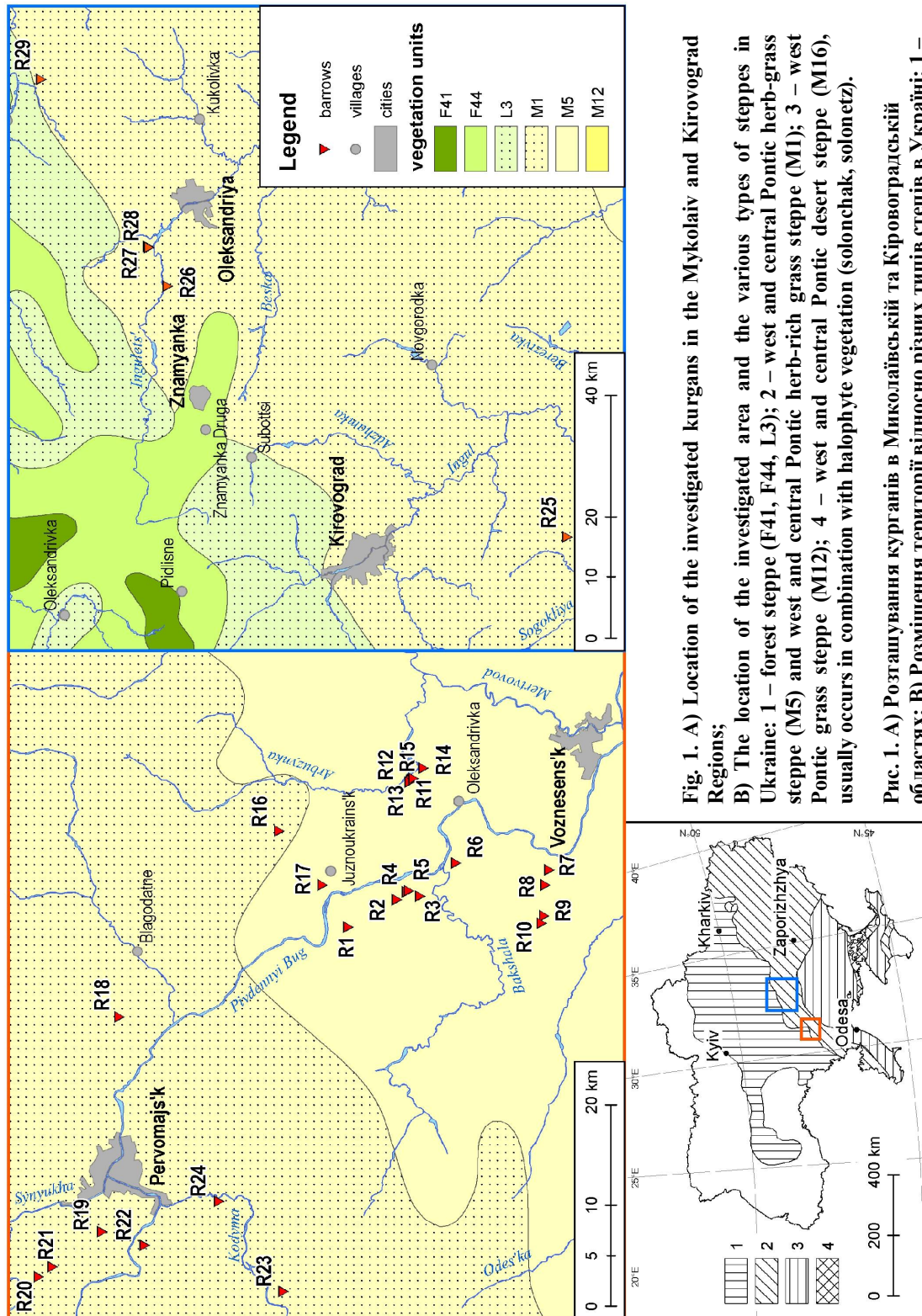


Table 1

The location and size of the investigated kurgans in the Pontic herb(-rich) grass steppe zone in Mykolaiv and Kirovograd Region

Таблиця 1

Локалізація та розміри досліджених курганів в зоні понтичного різнотравно- та багаторізнотравно-злакового степу на території Миколаївської та Кіровоградської областей

Code of the kurgan	Location (nearest village)	Longitude (E)	Latitude (N)	Height of kurgan (m)	Diameter of kurgan (m)
Region Mykolaiv					
District Domanivka					
R1	Bogdanivka	31 ⁰ 07'51.9"	47 ⁰ 48'15.1"	7	80
R2	Bogdanivka – Wynogradnyi Sad	31 ⁰ 09'27.0"	47 ⁰ 45'27.0"	6,5	80
R3	Wynogradnyi Sad	31 ⁰ 09'26.9"	47 ⁰ 44'12.0"	4,5	50
R4	Wynogradnyi Sad	31 ⁰ 09'55.5"	47 ⁰ 44'51.5"	4	50
R5	Wynogradnyi Sad	31 ⁰ 10'01.1"	47 ⁰ 44'44.9"	3	40
R6	Prybuzhzhya	31 ⁰ 11'37.4"	47 ⁰ 42'02.2"	5	65
R7	Zhovtneve – Zabara	31 ⁰ 09'59.4"	47 ⁰ 37'08.8"	6	80
R8	Zhovtneve – Zabara	31 ⁰ 08'51.5"	47 ⁰ 37'28.5"	6	70
R9	Zhovtneve – Zabara	31 ⁰ 06'29.5"	47 ⁰ 37'47.4"	7,5	80
R10	Zhovtneve – Zabara	31 ⁰ 05'55.3"	47 ⁰ 37'58.8"	6,5	80
District Voznesens'k					
R11	Trykraty	31 ⁰ 18'38.3"	47 ⁰ 43'39.7"	5	70
R12	Trykraty	31 ⁰ 18'36.7"	47 ⁰ 43'43.7"	7	80
R13	Trykraty	31 ⁰ 18'30.3"	47 ⁰ 43'49.3"	7	50
R14	Trykraty	31 ⁰ 19'25.6"	47 ⁰ 42'59.0"	7	80
R15	Trykraty	31 ⁰ 18'43.2"	47 ⁰ 43'36.0"	4	50
District Arbuzynka					
R16	Arbuzynka	31 ⁰ 16'11.5"	47 ⁰ 51'06.9"	5	70
R17	Yuzhnoukrains'k	31 ⁰ 11'27.1"	47 ⁰ 49'15.6"	5	70
District Pervomays'k					
R18	Blagodatne – Mygiya	31 ⁰ 03'24.3"	48 ⁰ 01'04.9"	8	80
R19	Chausove	30 ⁰ 46'35.7"	48 ⁰ 03'42.2"	6	100
R20	Lukashivka	30 ⁰ 43'46.9"	48 ⁰ 07'23.9"	8	90
R21	Lukashivka	30 ⁰ 44'23.6"	48 ⁰ 06'35.6"	5	40
R22	Konets'pol'	30 ⁰ 45'04.2"	48 ⁰ 01'32.8"	4,5	45
R23	Kumari	30 ⁰ 39'52.7"	47 ⁰ 54'33.0"	8	90
R24	Kam'yanyi mist	30 ⁰ 47'41.8"	47 ⁰ 57'15.7"	4,5	50
Region Kirovograd					
District Kompaniivka					
R25	Zhyvanivka	32 ⁰ 13'49.3	48 ⁰ 12'33.1	5	70
District Oleksandriya					
R26	Bandurivka	32 ⁰ 55'52.7"	48 ⁰ 43'53.0"	3	40
R27	Protopopivka	33 ⁰ 01'36.8"	48 ⁰ 44'57.7"	4,5	60
R28	Protopopivka	33 ⁰ 01'26.0"	48 ⁰ 44'55.9"	5	65
District Onufriivka					
R29	Onufriivka	33 ⁰ 26'25.1"	48 ⁰ 51'41.4"	6,5	70

Results

1. Biodiversity of the kurgan flora

A total of 439 species of vascular plants were reported from 29 kurgans in the Pontic herb(-rich) grass steppe zone (Appendix 1; the 3 additional species at the bottom of the table were found on the kurgans in this zone which were not investigated in the present study). The number of species on particular kurgans ranged from 89 to 171, 125,5 on average. The kurgan flora in the grass steppe was richer in species than the flora of the barrows in the desert steppe zone (305 species, MOYSIYENKO, SUDNIK-WÓJCIKOWSKA 2006C) and in the west Pontic grass steppe zone (355, SUDNIK-WÓJCIKOWSKA, MOYSIYENKO 2006). The species belonged to 248 genera and 53 families (in the grass steppe: 209 and 51, respectively and in the desert steppe: 192 and 48, respectively). The following families were represented by the greatest number of taxa: *Asteraceae*, *Poaceae*, *Fabaceae*, *Lamiaceae*, *Brassicaceae*, *Rosaceae*, *Scrophulariaceae*, *Caryophyllaceae*, *Apiaceae*, *Ranunculaceae*, *Liliaceae*, *Polygonaceae*, *Boraginaceae*, *Chenopodiaceae* and *Rubiaceae* (Fig. 2). When comparing with the flora of kurgans located in the other zones, the role of the following plant families increased: *Lamiaceae*, *Rosaceae*, *Apiaceae*. Genera represented by the highest number of taxa were, as follows: *Veronica* (10), *Artemisia* (7), *Astragalus* (7), *Achillea* (6), *Euphorbia* (6), *Galium* (6), *Medicago* (6), *Verbascum* (6), *Allium* (5), *Gagea* (5), *Potentilla* (5) and *Vicia* (5).

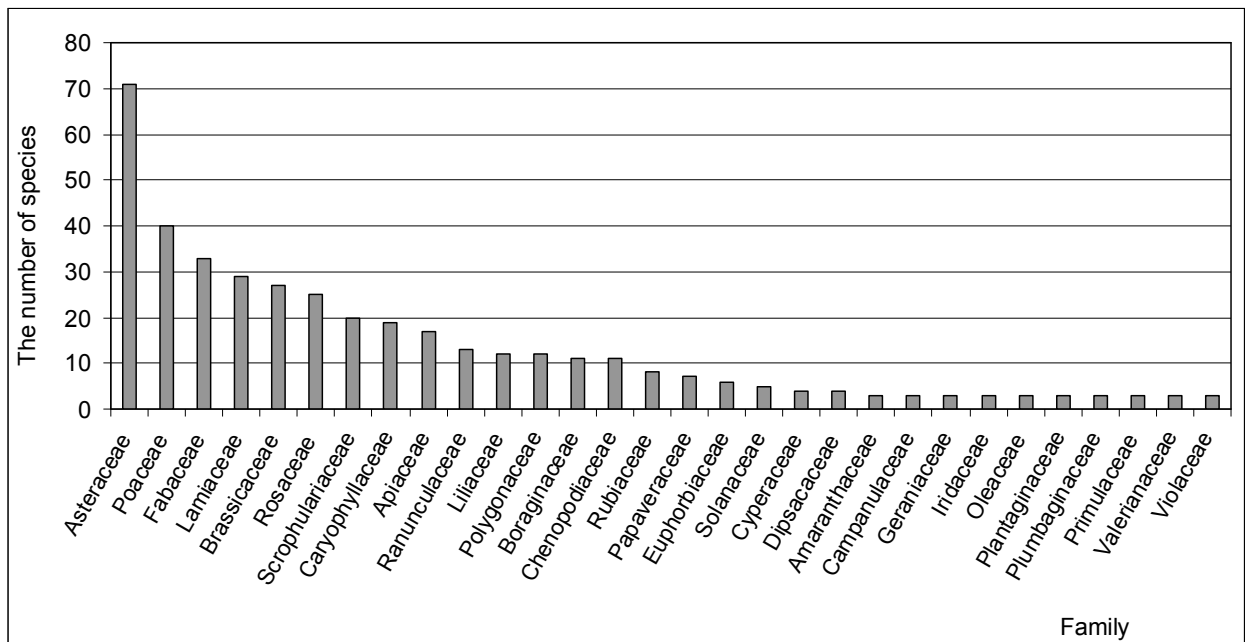


Fig. 2. The most important families (in terms of species number) in the total flora of kurgans in the Pontic herb(-rich) grass steppe zone.

Рис. 2. Найбільш представлені (за кількістю видів) у флорі курганів зони понтичного різнотравно-та багаторізнотравно-злакового степу родини.

About 156 species (36% of the total kurgan flora) with the first (I) frequency class (Fig. 3) were considered sporadic or accidental (on 1-2 kurgans only). The group of common species recorded on 23-29 of the studied kurgans (frequency class V) made up about 10% of the flora: *Artemisia absinthium* (29), *Artemisia austriaca* (29), *Convolvulus arvensis* (29), *Elytrigia repens* (29), *Linaria biebersteinii* (29), *Melandrium album* (29), *Poa angustifolia* (29), *Salvia nemorosa* (29), *Festuca valesiaca* (29), *Lactuca serriola* (29), *Berteroa incana* (28), *Carduus acanthoides* (28), *Coronilla varia* (28), *Euphorbia virgata* (28), *Falcaria vulgaris* (28), *Achillea setacea* (27), *Consolida paniculata* (27), *Koeleria cristata* (27), *Lamium amplexicaule* (27), *Sisymbrium loeselii* (27), *Stipa capillata* (27), *Hyoscyamus niger* (26), *Lathyrus tuberosus* (26), *Medicago falcata* (26), *Verbascum lychnitis* (26), *Agropyron*

pectinatum (25), *Ballota nigra* (25), *Chenopodium album* (25), *Centaurea adpressa* (25), *Euphorbia agraria* (25), *Galium aparine* (25), *Potentilla argentea* (25), *Senecio erucifolius* (25), *Achillea stepposa* (24), *Euphorbia stepposa* (24), *Onopordum acanthium* (24), *Stachys recta* (24), *Buglossoides arvensis* (23), *Cirsium arvense* (23), *Hypericum elegans* (23), *Melilotus officinalis* (23), *Seseli tortuosum* (23), *Viola kitaibeliana* (23).

The total abundance of every species within the kurgans theoretically ranged from 0 up to 435 (a 3-grade scale was used to estimate the abundance of species, and 5 microhabitats within the 29 kurgans studied were taken into account: $3 \times 5 \times 29 = 435$). The abundance of only a few species exceeded 200, i.e.: *Poa angustifolia* (289), *Elytrigia repens* (258), *Salvia nemorosa* (256), *Convolvulus arvensis* (249), *Falcaria vulgaris* (241), *Festuca valesiaca* (233), *Coronilla varia* (215), *Agropyron pectinatum* (209) and *Artemisia austriaca* (204). At the same time, the above taxa were the most frequently encountered species.

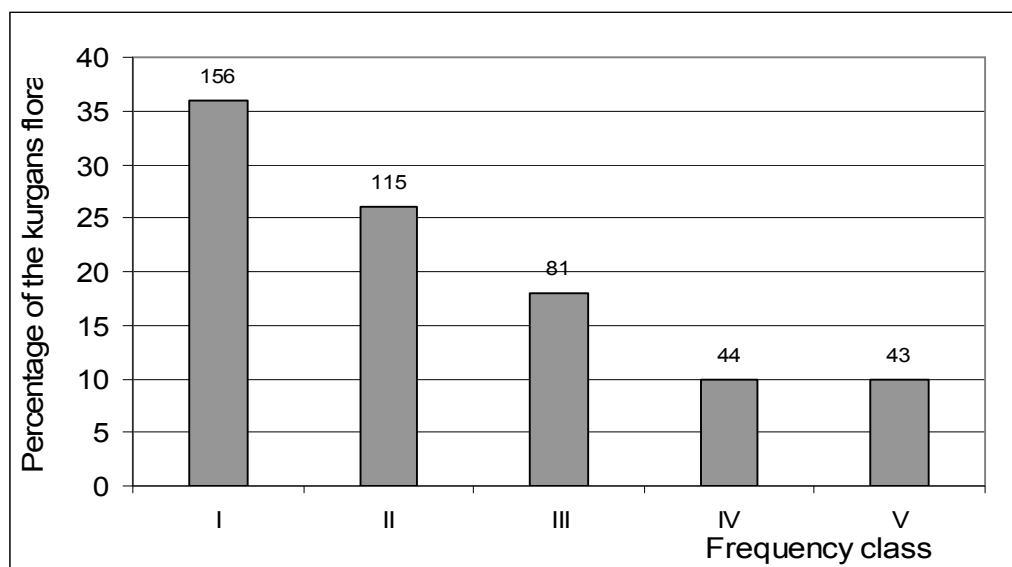


Fig. 3. Subdivision of the flora of kurgans in the Pontic herb(-rich) grass steppe zone by frequency class (the total number of species in each category is indicated at the top of the bar). Frequency classes: see Material and Methods.

Рис. 3. Розподіл флори курганів зони понтичного різнотравно- та багаторізнотравно-злакового степу за класами частоти трапляння (на верхівці стовпчика вказана абсолютна кількість видів у кожній категорії). Класи частоти трапляння: дивись Матеріали та методи.

2. Spectrum of life forms

The spectrum of life forms in the flora of kurgans in the Pontic herb(-rich) grass steppe zone corresponded to that of the flora of the proper steppe zone. However, hemicryptofites (no therophytes) are dominating group of species (38,8%). Perennial herbaceous caudex plants with a somewhat woody lower part of the stem seem better adapted to the conditions prevailing in the steppe, such as water deficit stress. Sod grass plants, which dominate in the steppe phytocoenoses, were qualified as hemicryptophytes: *Agropyron pectinatum*, *Festuca rupicola*, *Festuca valesiaca*, *Koeleria cristata*, *Stipa capillata*, *Stipa lessingiana* as well as a number of herbaceous dicotyledonous plants: *Asperula montana*, *Astragalus asper*, *Astragalus austriacus*, *Campanula sibirica*, *Centaurea stereophylla*, *Cephalaria uralensis*, *Dianthus guttatus*, *Eremogone longifolia*, *Euphorbia leptocaula*, *Ferulago galbanifera*, *Galatella villosa*, *Goniolimon besserianum*, *Inula oculus-christi*, *Jurinea multiflora*, *Limonium tomentellum* subsp. *alutaceum*, *Nepeta parviflora*, *Pastinaca clusii*, *Potentilla astracanica*, *Salvia austriaca*. The second largest group belonged to therophytes (35,1%), which usually dominated in the west Pontic grass steppe zone (43,2%),

as well as in the desert steppe zone (46,5%). Their high proportion in the flora of kurgans was determined by various anthropogenic factors. Unlike in the case of perennial species, anthropophytes dominated among therophytes (55%). Other life forms played a smaller role in the flora of the barrows: geophytes comprised 14% of the kurgan flora, and chamaephytes – 3,4%.

In the desert steppe zone phanerophytes comprised only 4% of the flora of kurgans (in the west Pontic grass steppe zone: 4,8%). Their role in the flora of the barrows increased towards the north (8,7%). In the Pontic herb(-rich) grass steppe zone the following species of native phanerophytes were recorded (being absent on the kurgans investigated in the zones southwards): *Acer tataricum*, *Caragana frutex*, *Chamaecytisus austriacus*, *Euonymus europaea*, *Ligustrum vulgare*, *Rosa villosa*, *Rubus caesius*, *Solanum dulcamara*, *Swida sanguinea*, *Tilia europaea*, *Ulmus minor*. In the case of the latter zone alien phanerophytes were: *Acer negundo*, *Amelanchier lamarckii*, *Cerasus vulgaris*, *Colutea arborescens*, *Fraxinus pennsylvanica*, *Lonicera tatarica*, *Prunus divaricata*, *P. domestica*, *P. cerasifera*.

The life form spectra differed in the particular microhabitats. Hemicryptophytes, which dominate in the flora of the steppe, attained their optimum development on the slopes, particularly on the southern side of the kurgans. As stated earlier, the slopes provided more favourable conditions for a number of steppe species. Compared with the top, they were less disturbed and were generally characterized by drier conditions than the foot of the kurgans. Species which were less tolerant of dry conditions were mainly encountered on the north slopes. Therophytes, among which were numerous anthropophytes, were mostly represented on the top of the barrows. Phanerophytes, which have a higher demand for moisture were more often found at the foot. The role of chamaephytes increased towards the top of the kurgans.

Considerable differences between the life form spectra of the particular microhabitats were detected. The top of the kurgans supported a higher number of therophytes and chamaephytes. Phanerophytes were associated mainly with the foot of the barrows. Geophytes were most abundant at the foot as well. The distribution of particular life forms on the kurgans was also determined by the exposition of the slope. Hemicryptophytes and therophytes were more often found on the southern side of the kurgans whereas the representation of phanerophytes and chamaephytes was higher on the northern side.

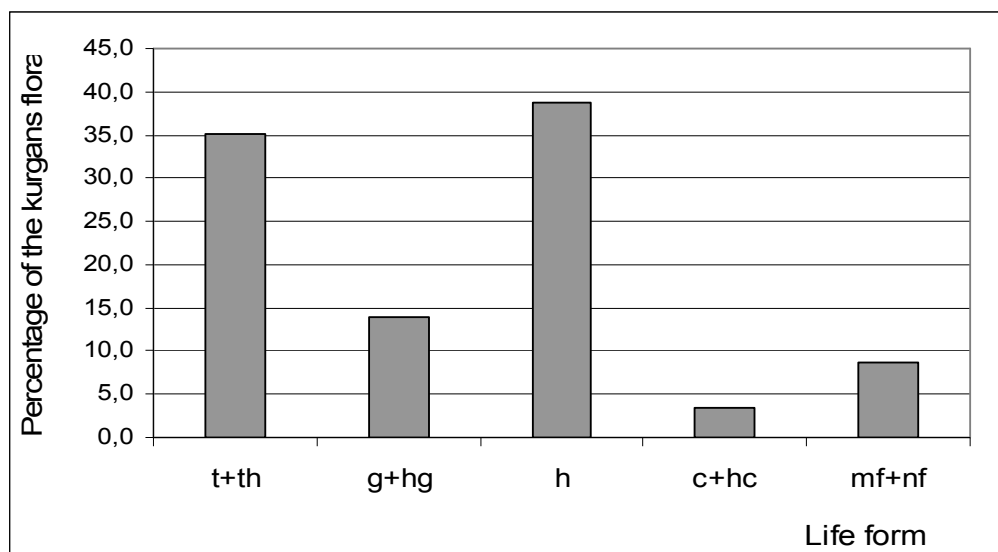


Fig. 4. Spectrum of life forms in the flora of kurgans in the Pontic herb(-rich) grass steppe zone (for abbreviations see Appendix 1).

Рис. 4. Спектр життєвих форм флори курганів зони понтичного різнотравно- та багаторізнотравно-злакового степу (прийняті скорочення дивись в Додатку 1).

3. Spectrum of socio-ecological groups

The flora of kurgans was distinguished by a wide sociological range. It included the representatives of at least 19 syntaxa of higher ranks (Fig. 5). As in the case of kurgans in the desert and grass steppe zones, species representing communities of the *Festuco-Brometea* and *Stellarietea mediae* classes had the biggest share concerning complex groups of steppe grasslands and synanthropic communities, 57,2 %, (i.e. 37,6 %, and 19,6 % respectively). Such domination reflects the character of the kurgan flora.

Species associated with steppe syntaxa: *Festuco-Brometea*, *Festucetea vaginatae*, *Polygono-Artemisietea* and *Galietaalia veri* comprised as much as 49,9 % of the kurgan flora (37,6%; 4,6%; 1,8%; 5,9% respectively). Species representing synanthropic syntaxa (with the exception of *Stellarietea mediae*), such as classes: *Artemisietea vulgaris* and *Agropyretea intermedio-repentis* as well as the *Plantaginietalia majoris* order (8,7%, 1,8%, 0,7% respectively) constituted 30,8 % of the kurgan flora.

Under more favourable soil moisture conditions, species belonging to the classes *Molinio-Arrhenatheretea* (except *Galietaalia veri*) and *Bidentetea* were found growing at the foot of the kurgans, mostly on their northern side. However, their proportion in the flora of kurgans was estimated at 4,8 % and 0,005% respectively.

Species associated with forest and scrub communities were much better represented in the flora of kurgans in the Pontic herb(-rich) grass steppe zone than in the desert steppe and grass steppe zones. A higher number of syntaxa which were represented by a big number of species were recorded. A total of 5 classes of tree and shrub communities were represented on the kurgans. Species associated with the above mentioned syntaxa constituted 8,9% of the flora of kurgans. The plant communities from the above classes were usually found at the foot of the kurgans. Other syntaxa of higher ranks, including halophyte communities (*Asteretea tripolii*, *Festuco-Puccinellietea*) were poorly represented on the kurgans.

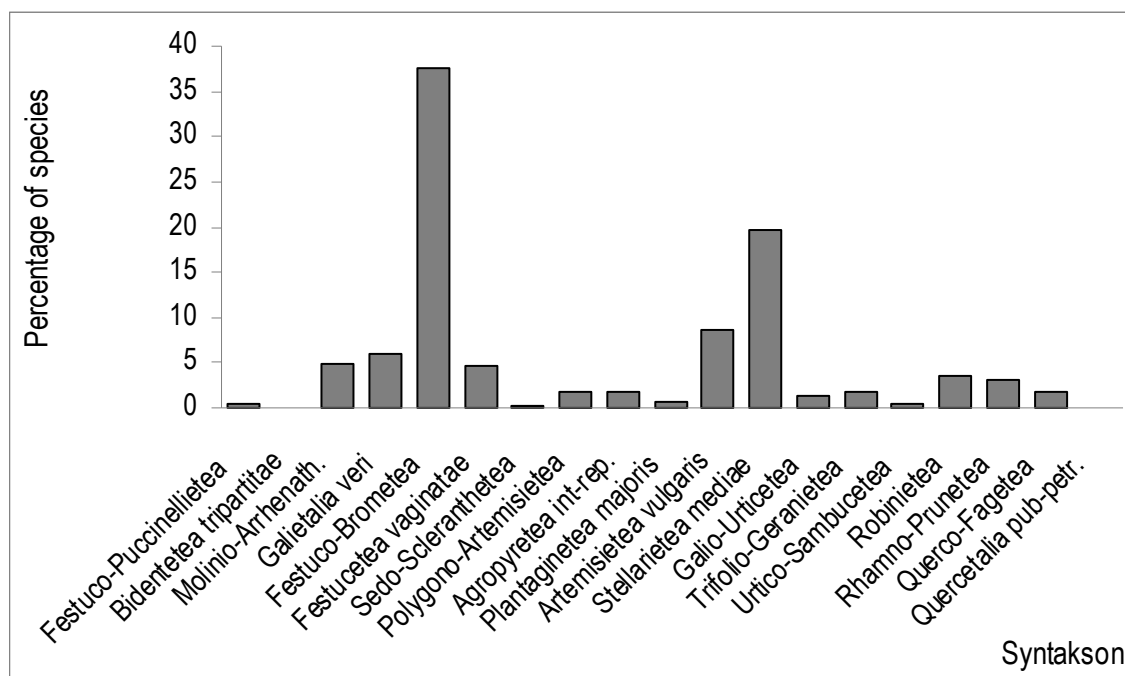


Fig. 5. The number of species of the syntaxa represented in the kurgan flora in the Pontic herb(-rich) grass steppe zone (the order of syntaxa is not random – syntaxa given in a gradient from natural to synanthropic).

Рис. 5. Кількість видів в синтаксонах представлених на курганах в зоні понтичного різнотравно- та багаторізнотравно-злакового степу (порядок синтаксонів не випадковий – в градієнті від натуральних до синантропних).

4. Spectrum of species groups in the historical-geographical classification of plants

The spectrum of synanthropic species groups in the flora of kurgans in the Pontic herb(-rich) grass steppe zone (Tab. 2, Fig. 6) corresponded basically with the spectra for the desert and grass steppe zones.

Native species accounted for 74,2% of the flora of kurgans in investigated zone whereas non-synanthropic plants comprised 41,4% of the kurgan flora, the most frequently occurring species were: *Achillea stepposa*, *Centaurea adpressa*, *Euphorbia stepposa*, *Festuca valesiaca*, *Hypericum elegans*, *Koeleria cristata*, *Salvia nemorosa*, *Seseli tortuosum*, *Stachys recta*, *Stipa capillata*. The percentage of native and non-synanthropic species in the flora of kurgans was similar in the case of the desert steppe zone: 77,2 % and 40,9 %, respectively and the west Pontic grass steppe zone: 70,8 % and 39,5 %, respectively.

Depending on the level of transformation of the microhabitats into which they penetrate, apophytes can be subdivided into 2 groups: hemiapophytes (21,4 % of the total flora) and euapophytes (11,4 %) (Fig. 6). With respect to frequency, hemiapophytes distinctly predominated over euapophytes, e.g. 14 hemiapophytes belonged to frequency class V (*Achillea setacea*, *Agropyron pectinatum*, *Artemisia austriaca*, *Coronilla varia*, *Euphorbia agraria*, *Euphorbia virgata*, *Falcaria vulgaris*, *Linaria biebersteinii*, *Medicago falcata*, *Poa angustifolia*, *Potentilla argentea*, *Senecio erucifolius*, *Verbascum lychnitis*, *Viola kitaibeliana*), but only 8 euapophytes represented the above mentioned frequency class (*Berteroa incana*, *Chenopodium album*, *Cirsium arvense*, *Consolida paniculata*, *Convolvulus arvensis*, *Elytrigia repens*, *Galium aparine*, *Melandrium album*, *Melilotus officinalis*). In addition, hemiapophytes were the second most numerous group (95). They were the most abundant group (abundancy 4156, Table 2) of native synanthropic species, as well. Native synanthropes (146 species) were less numerous than non-synanthropes (180). This difference was smaller when the total abundance of species was taken into account (5866 and 5362, respectively, Table 2).

The total number of species of alien origin (anthropophytes) amounted to 113. They comprised 25,8% of the flora of kurgans in the Pontic herb(-rich) grass steppe zone and represented 29 families, mainly *Asteraceae* (17 species), *Brassicaceae* (17 species), *Fabaceae* (10), *Poaceae* (9), *Rosaceae* (8) and *Chenopodiaceae* (7). Archaeophytes dominated among alien species (13,9% of the total flora of kurgans; the abundance of 61 species of archaeophytes was estimated at 2059). The most frequently occurring archaeophytes (frequency class V) were: *Ballota nigra*, *Buglossoides arvense*, *Carduus acanthoides*, *Hyoscyamus niger*, *Lactuca serriola*, *Lamium amplexicaule*, *Lathyrus tuberosus*, *Onopordum acanthium*, *Sisymbrium loeselii*. Kenophytes were less numerous (42 species; 9,6%) and their total abundance was estimated to be 711. No species of kenophytes represented frequency class V; the following species were, however, included in frequency class IV: *Ambrosia artemisiifolia*, *Cardaria draba*, *Conyza canadensis*, *Iva xanthiifolia*, *Rapistrum perenne*, *Reseda lutea*, *Rumex patientia*, *Thlaspi perfoliatum*, *Tragopogon major*. Ergasiophygophytes are a group of species which escaped from the cultivated fields surrounding the kurgans and became temporarily established on the barrows. They, however, made up only 2,3 % of the total flora of kurgans and were practically absent in the other steppe zones.

The synanthropization level of the flora of kurgans estimated from the proportion of native and alien synanthropic species on the kurgans was more or less the same in the three steppe zones studied (in the desert steppe zone: 59,1%, in the grass steppe zone: 60,5%, and in the Pontic herb(-rich) grass steppe zone: 58,6%). It is interesting to note that the percentage of the particular groups of synanthropic species was comparable in the three steppe zones. However, some differences appeared when the geographical origin of the species was analyzed. Asian species dominated (29%) in the flora of the Pontic herb(-rich) grass steppe zone. Mediterranean-Eurasian and Mediterranean-European species comprised 25% and 24%

of the flora, respectively. It should be noted that the number of anthropophytes of various origin changed in the south-north direction: in the desert steppe zone, the contribution of Mediterranean-(Eur)asian species was much higher than that of Asian species. In the case of the grass steppe, the differences in the proportion of the above two species groups were less pronounced, whereas in the Pontic herb(-rich) grass steppe zone Asian species were predominant.

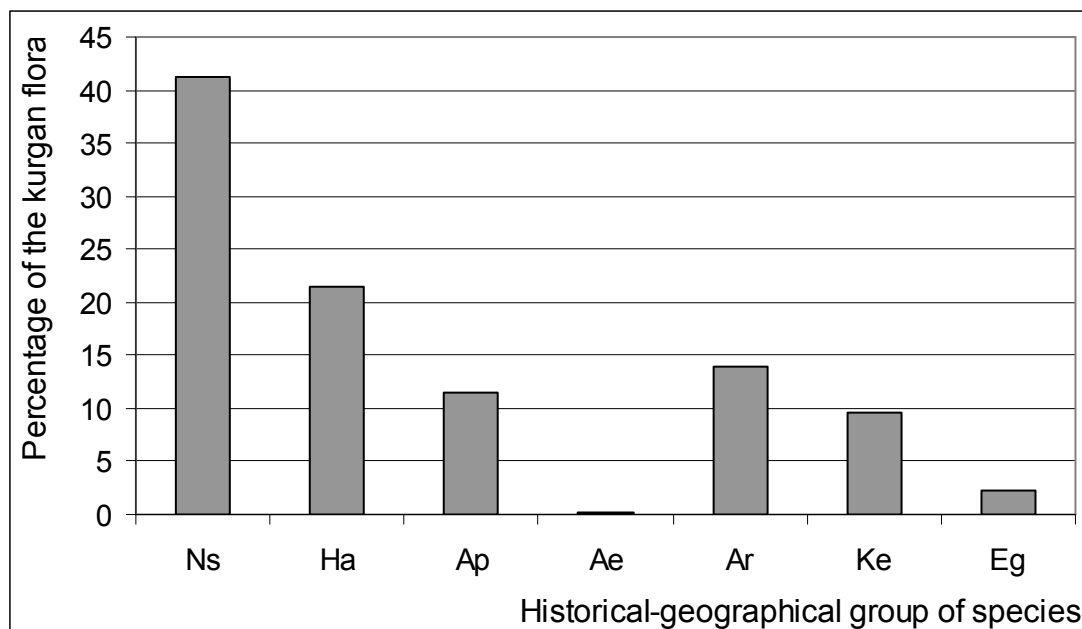


Fig. 6. Historical-geographical-classification of the flora of kurgans in the Pontic herb(-rich) grass steppe zone (for abbreviations see Appendix 1 and Table 2).

Рис. 6. Географічно-історична класифікація флори курганів зони понтичного різнотравно- та багаторізнотравно-злакового степу (прийняті скорочення дивись в Додатку 1 та Таблиці 2).

Table 2

The number and abundance of species in groups of historical-geographical classification of the flora of kurgans in the Pontic herb(-rich) grass steppe zone

Таблиця 2

Кількість і рясність видів в групах географічно-історичної класифікації флори курганів зони понтичного різнотравно- та багаторізнотравно-злакового степу

Historical-geographical- group in the kurgan flora	Species in historical-geographical group		Total abundance of species in historical-geographical group	
	Number	%	Number	%
Indigenous species:	326	74,3	11228	80,1
Non-synanthropes (Ns)	180	41,0	5362	38,2
Apophytes:	146	33,3	5866	41,8
- Hemiapophytes (Ha)	95	21,6	4156	29,6
- Euapophytes (Ap)	50	11,4	1704	12,2
- Oekiophytes (Ae)	1	0,2	6	0,04
Anthropophytes:	113	25,7	2795	19,9
Archaeophytes (Ar)	61	13,9	2059	14,7
Kenophytes (Ke)	42	9,6	711	5,0
Ergasiophygophytes (Eg)	10	2,3	25	0,2
Total flora	439	100	14023	100

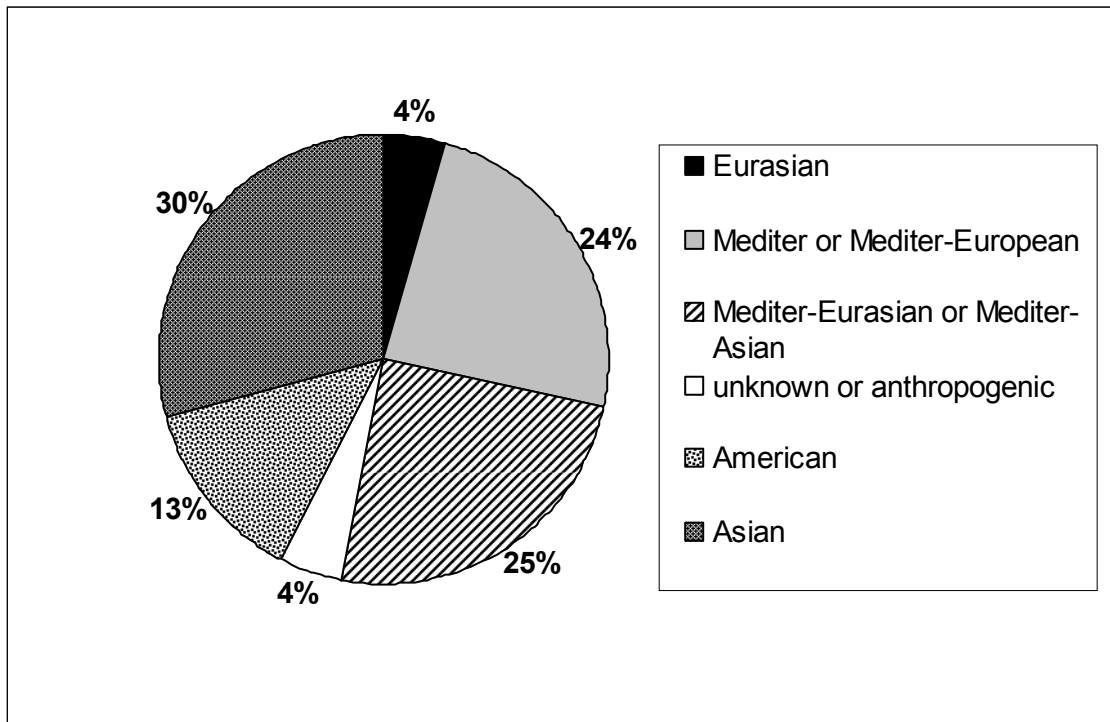


Fig. 7. Origin of the alien flora of kurgans in the Pontic herb(-rich) grass steppe zone.

Рис. 7. Походження адвентивного елемента флори курганів зони понтичного різнотравно- та багаторізнотравно-злакового степу.

Floristic value of the kurgans and conservation of the plant cover

Problems related to the conservation of the flora of kurgans were more widely discussed in our earlier paper [SUDNIK-WÓJCIKOWSKA, MOYSIYENKO, 2006] devoted to the flora of the grass steppe zone. Therefore the present work gives only a short description of the sozophytes (species of special concern) that occurred on the kurgans in the Pontic herb(-rich) grass steppe zone.

Among the species listed (Appendix 1), the majority – over 71% – were native plants, of which at least 17 should be considered as particularly interesting: *Astragalus dasyanthus*, *Elytrigia stipifolia*, *Linaria biebersteinii* listed in 1997 IUCN – Red List of Threatened Plants” [МОСЯКІН, 1999], *Galium volhynicum*, *Phlomis hybrida* and also *Astragalus dasyanthus*, *Elytrigia stipifolia* from the “Europeaen Red List” [Червона книга..., 1996], *Crocus reticulatus*, *Stipa capillata*, *Stipa lessingiana* and also *Astragalus dasyanthus*, *Elytrigia stipifolia* – from the “Red Data Book of Ukraine” [ЧЕРВОНА КНИГА..., 1996], *Adonis vernalis*, *Amygdalus nana*, *Anemone sylvestris*, *Iris halophila*, *Limonium platyphyllum* – from the “Red List of Mykolaiv Region [РЕГІОНАЛЬНИЙ «ЧЕРВОНИЙ» СПИСОК МИКОЛАЇВСЬКОЇ ОБЛАСТІ, 1990]” and *Goniolimon tataricum*, *Hesperis tristis*, *Ornithogalum kochii* – from the “Red List of Kirovograd Region” [ЗАПОВІДНІ КУТОЧКИ КІРОВОГРАДСЬКОЇ ЗЕМЛІ, 1999].

Although in the zone studied the flora of kurgans was richer in species than that in the grass steppe zone, the number of sozophytes on the barrows was slightly lower (17 and 18 species, respectively) in the Pontic herb(-rich) grass steppe zone. The flora of kurgans in the latter zone was more similar to that of the barrows in the desert steppe zone with respect to the percentage of sozophytes (3,9% and 3,3%, respectively). In the case of the grass steppe zone sozophytes comprised 5,1% of the total flora of kurgans. A certain tendency can, therefore, be observed [МОЙСИЕНКО, СУДНИК-ВОЙЦИКОВСКАЯ 2008]. Among large number of natural communities and those resembling natural ones occurring on the kurgans the steppe communities have been preserved to great extent. The high percentage of sozophytes in the

flora of kurgans was consistent with the high percentage of steppe species. Their proportion in the flora of kurgans was as follows (from south to north): in the desert steppe zone: 41% steppe species, 3,3% sozophytes, in the grass steppe zone: 65,7%/5,1%, and in the Pontic herb(-rich) grass steppe zone: 49,9%/3,9%. The steppe species as well as sozophytes were most numerous in the grass steppe zone, which is located between the other two steppe zones, and practically does not border directly any other zones than the steppe zones. The other two zones have, to some extent, a transitional character. In the south the desert steppe zone merges into the desert (there is no true desert in Ukraine yet; there are, however, intrazonal, halophilous communities characteristic of the seaside zone). Thus the flora is richer in halophyte species, and the role of steppe species decreases. In the north, the Pontic herb(-rich) grass steppe zone gives way to the forest steppe zone. The number of steppe species declines in the above zone as well, whereas the number of forest and meadow species increases. The number of sozophytes recorded on particular kurgans varied from 2 to 9 species (4,5 on average). The most valuable kurgans were R2 and R14, which supported the highest number of sozophytes (9 species on each of the kurgans) of all the kurgans investigated in the steppe zone. It should be noted, however, that not only do the kurgans rich in sozophytes need to be protected, but also all the barrows containing fragments of steppe communities that have survived up to the present.

Acknowledgements

The study was supported by the Ministry of Science and Higher Education in Poland: grant 2 P04G 046 27 (2004-2007) and grant NN 304081835 (2008-2011).

References

- БЛИК Г.І. Принципи класифікації та класифікаційна схема степів України // Рослинність УРСР. Степи кам'янисті відслонення, піски. – Київ: Наукова думка, 1973. – С. 29-33.
- ЗАПОВІДНІ КУТОЧКИ КІРОВОГРАДСЬКОЇ ЗЕМЛІ / Андрієнко Т.Л., Терещенко П.С., Клецов М.Л. та ін. (під заг. ред. д.б.н. Т.Л. Андрієнко). – Київ: Арктур-А, 1999. – 240 с.
- ЛАВРЕНКО Е.Н., КАРАМЫШЕВА З.В., НИКУЛИНА Р.И. Степи Евразии. – Ленинград: Из-во «Наука», 1991. – 146 с.
- МАРИНИЧ А.М., ПАЩЕНКО В.М., ШИЩЕНКО П.Г. Природа Украинской ССР. Ландшафты и физико-географическое районирование. – Київ: Наук. думка, 1985. – 222 с.
- МИРКИН Б.М., НАУМОВА Л.Г. Наука о растительности. – Уфа: Гилем, 1998. – 412 с.
- МОСЯКІН С.Л. Рослини України у Світовому Червоному списку // Укр. ботан. журн. – 1999. – Т. 56, № 1. – С. 79-88.
- МОЙСІЄНКО І., СУДНИК-ВОЙЦИКОВСЬКА Б. Адвентивні рослини на курганах в пустельних степах півдня України // Синантропізація рослинного покриву України (м. Переяслав-Хмельницький, 27-28 квітня 2006). – Тези наукових доповідей. – Київ, Переяслав-Хмельницький, 2006а. – С. 142-144.
- МОЙСИЕНКО И., СУДНИК-ВОЙЦИКОВСКА Б. Особенности флоры курганов пустынно-степной зоны Украины // Степи Северной Евразии. Материалы IV Международного симпозиума. Под научной редакцией члена корреспондента РАН А.А. Чибилева. – Оренбург: ИПК «Газпромнефтегазсервис», 2006 б. – С. 481-483.
- МОЙСІЄНКО І.І., СУДНИК-ВОЙЦИКОВСЬКА Б. Созофіти у флорі курганів – рефугіумів степової флори на півдні України // Заповідна справа в Україні. – Т. 14, Вип. 1. – 2008. – С.16-24.
- ПРИРОДА УКРАИНСКОЙ ССР. КЛИМАТ / Бабиченко В.Н., Барабаш М.Б., Логвинов К.Т. и др. (Отв. ред. Логвинов К.Т., Щербань М.Г.). – К.: Наукова думка, 1984. – 232 с.
- ПРИРОДА УКРАИНСКОЙ ССР. ПОЧВЫ / Вернандер Н.Б., Гоголев И.Н., Ковалишин Д.И. и др. (Отв. ред. Н.Б.Вернандер, Д.А.Тютюнник). – К.: Наукова думка, 1986. – 214 с.
- РЕГІОНАЛЬНИЙ «ЧЕРВОНИЙ» СПИСОК МИКОЛАЇВСЬКОЇ ОБЛАСТІ // Рішення III сесії 16 скликання Миколаївської обласної ради депутатів трудящих від 16 жовтня 1990 р. – Миколаїв, 1990. – 15 с.
- СОЛОМАХА В.А. Синтаксономія рослинності України // Укр. фітоцен. зб. – Фітосоціоцентр. – Київ, 1996. – Сер. А, вип. 4 (5). – 120 с.
- ЧЕРВОНА КНИГА УКРАЇНИ / Ю.Р.Шеляг-Сосонко (відп. ред.) та ін. – Київ: Вид-во Укр. енцикл., 1996. – 608 с.
- MAP OF THE NATURAL VEGETATION OF EUROPE. Scale 1: 2 500 000 [Karte der natürlichen Vegetation Europas, 1:2 500 000] / Bohn U., Gollub G., Hettwer C. & al. – Bonn: Bundesamt für Naturschutz, 2000. – Maps: 9 sheets. – Legend: 153 p.

- MATUSZKIEWICZ W. Przewodnik do oznaczania zbiorowisk roślinnych Polski. – Warszawa: Wydawnictwo Naukowe PWN, 2001. – 537 p.
- MOSYAKIN S. L., FEDORONCHUK M. M. Vascular plants of Ukraine. A nomenclatural checklist. – Kiev: M. G. Kholodny Institute of Botany, National Academy of Sciences of Ukraine, 1999. – 346 p.
- MOYSIYENKO I.I., SUDNIK-WÓJCIKOWSKA B. The Flora of Kurgans in the Desert Steppe Zone of Southern Ukraine. Chornomors'k. bot. z. – 2006. – Vol. 2, N 1. – P. 5-35.
- SUDNIK-WÓJCIKOWSKA B., MOYSIYENKO I.I. The Flora of Kurgans in the West Pontic Grass Steppe Zone of Southern Ukraine. Chornomors'k. bot. z. – 2006. – Vol. 2, N 2. – P. 14-44.
- SUDNIK-WÓJCIKOWSKA B., MOYSIYENKO I.I. The floristic differentiation of microhabitats within kurgans in the desert steppe zone of southern Ukraine // Acta Soc. Bot. Pol. – 2008. – Vol. 77, N 2. – P. 139-147.

Рекомендує до друку
А.В. Єна

Отримано 21.08.2009 р.

Адреса автора:

I.I. Мойсієнко
Кафедра ботаніки,
Херсонського державного університету,
Вул. 40 років Жовтня, 27, 73000 Херсон,
Україна
e-mail: Vanvan@ksu.ks.ua

Author's address:

Ivan Moysiienko,
Department of Botany,
Kherson State University,
Str. 40 let Oktriabrya 27, 73000 Kherson,
Ukraine
e-mail: Vanvan@ksu.ks.ua

Адреса автора:

Barbara Sudnik-Wójcikowska,
Zakład Ekologii Roślin i Ochrony Środowiska,
Uniwersytet Warszawski,
Al. Ujazdowskie 4,
00-478 Warsaw, Poland;
e-mail: barbara.sudnik@uw.edu.pl

Author's address:

Barbara Sudnik-Wójcikowska,
Department of Plant Ecology and Environmental
Conservation,
University of Warsaw, Al. Ujazdowskie 4,
00-478 Warsaw, Poland;
e-mail: barbara.sudnik@uw.edu.pl

APPENDIX 1. Flora of the kurgans in desert steppe zone and their microhabitats

Abbreviations applied in Table:

Microhabitats:

- T – the top of the barrow;
- Ss – the southern slopes;
- Sn – the northern slopes;
- Bs – the southern foot;
- Bn – the northern foot.

Data regarding the occurrence of species in particular microhabitats are presented in the following order:

T	
Ss	Sn
Bs	Bn

Life forms:

- t – therophytes;
- th – short-living perennials (2,3,4 years old);
- g – geophytes;
- w – hydrophytes;
- h – hemicryptophytes;
- hg – geophytes-hemicryptophytes – perennials, some of whose perennating buds (shoot system) remain on the soil surface and underground;
- hc – hemicryptophytes-chamaephytes – perennials whose perennating buds remain on or above (within 0.25 m) the soil surface;
- c – chamaephytes;
- mf – megaphanerophytes;
- nf – nanophanerophytes;

Syntaxa:

- Agro int-rep* – *Agropyretea intermedio-repentis* (Oberd. et al. 1967) Müller et Görs 1969)
- Alne glut* – *Alnetea glutinosae* Br.-Bl. et R. Tx. 1943
- Alth offi* – *Althaetalia officinalis* V. Golub et Mirkin in V. Golub 1995 {*Molinio-Arrhenatheretea* T. Tx 1937}
- Ammoph* – *Ammophiletea* Br.-Bl. et R. Tx. 1943
- Artemi* – *Artemisietea vulgaris* Lohm., Prsg et R. Tx. in R. Tx. 1950
- Aste trip* – *Asteretea trifolium* Westh. et Beeft. ap. Beeft. 1962
- Bident* – *Bidentetea tripartiti* R. Tx., Lohm. et Prsg. 1950
- Caki mari* – *Cakiletea maritima* R. Tx. et Prsg. 1950
- Crit-Limo* – *Crithmo-Limonieta* Br.-Bl. 1947
- Crit-Stat* – *Crithmo-Staticetea* Br.-Bl. 1947
- Fest vagi* – *Festucetea vaginatae* Soy 1968 em. Vicherek 1972 or *Festucetalia vaginatae* Soy {*Festuco-Brometea* Br.-Bl. et R. Tx. 1943}
- Fest-Brom* – *Festuco-Brometea* Br.-Bl. et R. Tx. 1943
- Fest-Pucc* – *Festuco-Puccinellietea* Soy (incl. *Festuco-Limonieta* Karpov et Mirkin 1985)
- Gali veri* – *Galietaalia veri* Mirkin et Naumova 1986 {*Molinio-Arrhenatheretea* T. Tx. 1937}
- Gali-Urti* – *Galio-Urticetea* Passarge 1967 or *Galio-Urticenea* (Passarge 1967) {*Artemisietea* Lohm., Prsg. et R. Tx. in R. Tx. 1950}
- Glecho* – *Glechometalia hederaceae* R. Tx. in R. Tx.
- Moli-Arrh* – *Molinio-Arrhenatheretea* R. Tx. 1937
- Phragmi* – *Phragmitetalia* Koch 1926
- Plan majo* – *Plantaginetea majoris* T. Tx. et Prsg. 1950 or *Plantaginetalia majoris* R. Tx. (1943) 1950 {*Molinio-Arrhenatheretea* R. Tx. 1937}
- Poly-Arte* – *Polygono-Artemisietea austriacae* Mirkin, Sakhapov et Solomeshch in Mirkin et al. 1986
- Quer rob-pe* – *Quercetea robori-petraeae* Br.-Bl. et R. Tx. 1943
- Quer pub-pe* – *Quercetalia pubescenti-petraeae* Klika 1933 corr. Moravec in Beg. et Theurill 1984
- Quer-Fage* – *Quercetalia pubescenti-petraeae* Klika 1933 corr. Moravec in Beg. et Theurill 1984
- Rham-Prun* – *Rhamno-Prunetea* Rivas, Goday et Garb. 1961}
- Robin* – *Robinieta* Jurko ex Hadac et Sofron 1980
- Sali purp* – *Salicetea purpureae* Moor 1958
- Sedo-Scle* – *Sedo-Scleranthetea* Br.-Bl. 1955
- Stel medi* – *Stellarietea mediae* T. Tx., Lohm., et Prsg. 1950 (incl. *Chenopodietea* Br.-Bl. 1952 em. Lohm., J. et R. Tx. 1961 ex Matuszk. 1962 & *Secalietea* Br.-Bl. 1951)

Trif-Gera – *Trifolio-Geranietea sanguinei* Th. Müller 1962

Urti-Samb – *Urtico-Sambucetea* Doing 1962 em. Pass. 1968

Vacc-Pice – *Vaccinio-Piceetea* Br-Bl. 1939

[] – indicates that the introduced species were established in the particular plant community types (see Table);

{ } – indicates that the syntaxon belongs to a given class (see above list of syntaxa abbreviations).

Historical-geographical classification of species:

Native species:

Ns – native species, not established in anthropogenic habitats;

Ap – proper apophytes = euapophytes, natives established in anthropogenic habitats;

Ha – hemiapophytes, natives established only in semi-natural habitats;

Ae – oekioophytes, natives grown (e.g. in plantations or in windbreaks) and recorded in anthropogenic habitats.

Aliens:

Ar – archaeophytes, aliens that immigrated before the year 1500;

Ke – kenophytes, aliens introduced after the year 1500;

Eg – ergasiophygophytes, cultivated plants not established in the new territory, appearing only temporarily.

Origin of alien species – groups and abbreviations:

1 Mediterr (= Mediterranean), sub-Mediterr (= sub-Mediterranean);

2 European, Atlantic, sub-Atlantic;

3 Eurasian, Eurosiberian, boreal-Eurasian, continent. (= continental), subcontinent (= subcontinental);

4 W-Asian (=Western-Asian), Middle-Asian, C-Asian (= Central Asian), Irano-Turanian, Indian, Malay;

5 African,

6 North American, Central American, South American.

Status of the protected species:

* – World Red List

** – European Red List

*** – Red Data Book of Ukraine

**** – Red Lists of Mykolaiv Region and Kirovograd Region

At the bottom of the Table the flora of each kurgan is described taking into account:

1 the number of species;

2 the number of species in all of its microhabitats.

Species	Species distribution on the kurgans (P 1-29) and abundance in each of the five microhabitats (T, Ss, Sn, Bs, Bn) studied																													The total number of occurrence records of species in the particular microhabitats on all of the kurgans studied	The total abundance of species in the particular microhabitats on all of the kurgans studied	The number of kurgans where species were recorded	The total number of occurrence records of species in all microhabitats on all of the kurgans studied	The total abundance of species in all microhabitats on all of the kurgans studied	Status of species	Origin of anthropophytes	Life form	Socio-ecological group					
	1	2	3	4	5	6	7	8	9	10	11	12	13	14	15	16	17	18	19	20	21	22	23	24	25	26	27	28	29										30	31	32	33	34
<i>Acer negundo</i> L.	-	-	-	-	-	-	-	-	-	-	-	-	-	-	-	-	-	-	-	-	-	-	-	-	-	-	-	-	-	3	8	4	9	8	11	13	Ke	North American	mf	Robin			
<i>Acer tataricum</i> L.	-	-	-	-	-	-	-	-	-	-	-	-	-	-	-	-	-	-	-	-	-	-	-	-	-	-	-	-	-	-	-	-	1	1	1	Ns		nf	Quer-Fage, Robin				
<i>Achillea millefolium</i> L.	-	-	-	-	-	-	-	-	-	-	-	-	-	-	-	-	-	-	-	-	-	-	-	-	-	-	-	-	-	1	1	1	3	1	2	4	Ha		hg	Artemi, Moli-Arrh			
<i>Achillea nobilis</i> L.	2	2	2	2	2	2	2	2	2	2	2	2	2	2	2	2	2	2	2	2	2	2	2	2	2	2	2	2	2	2	8	13	15	21	24	17	49	76	Ns		h	Fest-Brom, Artemi	
<i>Achillea panonica</i> Scheele	1	1	1	1	1	1	1	1	1	1	1	1	1	1	1	1	1	1	1	1	1	1	1	1	1	1	1	1	1	6	14	7	16	18	47	65	Ns		h	Fest-Brom, Artemi			
<i>Achillea setacea</i> Waldst. & Kit.	2	3	2	2	2	2	2	2	2	2	2	2	2	2	2	2	2	2	2	2	2	2	2	2	2	2	2	2	2	13	21	23	38	27	82	154	Ha		hg	Fest-Brom, Poly-Arte, Gali veri			
<i>Achillea stepposa</i> Klokov & Krytzka	-	-	1	1	-	-	1	-	-	-	-	-	-	-	-	-	-	-	-	-	1	1	2	-	-	1	1	1	1	4	12	6	14	24	60	95	Ns		hg	Fest-Brom			
<i>Acinos arvensis</i> (Lam.) Dandy	-	-	-	-	-	-	-	-	-	-	-	-	-	-	-	-	-	-	-	-	-	-	-	-	-	-	-	-	-	0	0	0	0	2	2	2	Ha		t	Fest-Brom, Stel medi			
<i>Adonis aestivalis</i> L.	-	-	-	-	-	-	2	-	-	-	-	-	-	-	-	-	-	-	-	-	-	-	-	-	-	-	-	-	-	0	0	0	0	5	7	9	Ar	Meditt.-Ir.-Tur.	t	Stel medi			
<i>Adonis vernalis</i> L.	-	1	-	-	-	-	-	-	-	-	-	-	-	-	-	-	-	-	-	-	-	-	-	-	-	-	-	-	-	0	1	0	1	4	4	5	Ns	****	h	Fest-Brom			
<i>Adonis wolgensis</i> Steven	-	-	1	2	1	2	-	-	-	-	-	-	-	-	-	-	-	2	-	1	2	-	-	-	-	-	-	-	-	4	5	4	9	7	16	25	Ns		h	Fest-Brom			
<i>Aegilops cylindrica</i> Host	-	-	-	-	-	-	-	-	-	-	-	-	-	-	-	-	-	-	-	-	-	-	-	-	-	-	-	-	-	0	0	0	0	1	1	1	Ha		t	Fest-Brom, Stel medi			
<i>Agrimonia eupatoria</i> L.	-	-	-	-	-	-	-	-	-	-	-	-	-	-	-	-	-	-	-	-	-	-	-	-	-	-	-	-	-	0	0	0	0	11	19	25	Ns		h	Gali veri, Fest-Brom, Trif-Gera			
<i>Agropyron pectinatum</i> (M.Bieb.) P.Beauv.	3	2	2	2	3	-	-	3	3	3	3	2	3	-	3	3	3	3	3	2	3	3	3	2	1	3	2	2	1	3	2	5	23	25	59	48	25	96	209	Ha		h	Poly-Arte, Fest-Brom, Fest vagi

	1	2	3	4	5	6	7	8	9	10	11	12	13	14	15	16	17	18	19	20	21	22	23	24	25	26	27	28	29	30	31	32	33	34	35	36	37	38		
<i>Agrostemma githago</i> L.	-	-	-	-	-	-	-	-	-	-	-	-	-	-	-	-	-	-	-	-	-	-	-	-	-	-	-	-	-	0	0	0	0	1	2	3	Ar	t	Stel medi	
<i>Ajuga chia</i> Schreb.	-	-	-	1	1	1	1	1	1	1	1	1	-	-	-	-	-	-	-	-	-	-	-	-	-	-	-	-	-	8	3	3	8	13	25	26	Ha	h,e	Fest-Brom, Stel medi	
<i>Ajuga genevensis</i> L.	1	1	1	2	1	1	1	1	1	1	1	1	-	-	-	-	-	-	-	-	-	-	-	-	-	-	-	-	4	1	5	1	13	20	24	Ns	h	Fest-Brom, Moli-Arth		
<i>Alcea rosea</i> L.	-	-	-	-	-	-	-	-	-	-	-	-	-	-	-	-	-	-	-	-	-	-	-	-	-	-	-	-	-	0	0	0	0	1	1	1	Eg	unknown origin	h	Artemi
<i>Allium flavescens</i> Besser	-	-	-	2	-	-	-	-	-	-	-	-	-	-	-	-	-	-	-	-	-	-	-	-	-	-	-	-	-	7	5	9	9	8	20	28	Ns	g	Fest-Brom	
<i>Allium pazcoskianum</i> Tuzs.	-	1	1	-	-	-	-	-	-	-	-	-	-	-	-	-	-	-	-	-	-	-	-	-	-	-	-	-	-	6	4	7	5	10	11	13	Ns	g	Fest-Brom	
<i>Allium paniculatum</i> L.	-	-	-	-	-	-	-	-	-	-	-	-	-	-	-	-	-	-	-	-	-	-	-	-	-	-	-	-	-	2	7	3	12	8	16	23	Ns	g	Fest-Brom	
<i>Allium rotundum</i> L. aggr.	-	-	1	1	-	-	-	-	-	-	-	-	-	-	-	-	-	-	-	-	-	-	-	-	-	-	-	-	-	3	5	3	6	7	23	31	Ns	g	Fest-Brom, Gali veri	
<i>Alopecurus pratensis</i> L.	-	-	1	1	-	-	-	-	-	-	-	-	-	-	-	-	-	-	-	-	-	-	-	-	-	-	-	-	-	0	0	0	0	3	4	6	Ns	g	Gali veri, Moli-Arth	
<i>Alyssum desertorum</i> Stapf	-	-	-	-	-	-	-	-	-	-	-	-	-	-	-	-	-	-	-	-	-	-	-	-	-	-	-	-	-	5	1	10	1	9	12	17	Ha	t	Fest-Brom, Fest vagi, Poly-Arte, Stel medi	
<i>Alyssum hirsutum</i> M.Bieb.	-	2	2	-	-	-	-	-	-	-	-	-	-	-	-	-	-	-	-	-	-	-	-	-	-	-	-	-	-	2	0	4	0	2	4	8	Ha	t	Fest vagi, Fest-Brom, Stel medi	
<i>Amaranthus albus</i> L.	-	-	-	-	-	-	-	-	-	-	-	-	-	-	-	-	-	-	-	-	-	-	-	-	-	-	-	-	-	0	0	0	0	1	2	2	Ke	North American	t	Stel medi
<i>Amaranthus blitoides</i> S.Watson	-	-	-	-	-	-	-	-	-	-	-	-	-	-	-	-	-	-	-	-	-	-	-	-	-	-	-	-	-	0	0	0	0	1	1	1	Ke	South American	t	Stel medi
<i>Amaranthus retroflexus</i> L.	-	-	-	-	-	-	-	-	-	-	-	-	-	-	-	-	-	-	-	-	-	-	-	-	-	-	-	-	-	0	2	0	2	13	17	18	Ke	North & Central American	t	Stel medi
<i>Ambrosia artemisiifolia</i> L.	-	-	-	-	-	-	-	-	-	-	-	-	-	-	-	-	-	-	-	-	-	-	-	-	-	-	-	-	-	0	2	0	2	17	21	22	Ke	North American	t	Stel medi
<i>Amelanchier lamarkii</i> F.G.Schroed.	-	-	-	-	-	-	-	-	-	-	-	-	-	-	-	-	-	-	-	-	-	-	-	-	-	-	-	-	-	0	0	0	0	1	2	2	Eg	North American	nf	Robin
<i>Amygdalus nana</i> L.	-	-	1	1	2	-	-	-	-	-	-	-	-	-	-	-	-	-	-	-	-	-	-	-	-	-	-	-	-	3	8	6	12	10	31	63	Ns (****)	nf	Fest-Brom	
<i>Anagallis foemina</i> Mill.	-	-	-	-	-	-	-	-	-	-	-	-	-	-	-	-	-	-	-	-	-	-	-	-	-	-	-	-	-	0	0	0	0	1	1	1	Ar	Mediterr	t	Stel medi
<i>Anchusa officinalis</i> L.	2	2	1	-	-	-	-	-	-	-	-	-	-	-	-	-	-	-	-	-	-	-	-	-	-	-	-	-	-	4	6	5	5	9	26	34	Ar	Mediterr	h	Artemi
<i>Androsace elongata</i> L.	2	2	-	-	-	-	-	-	-	-	-	-	-	-	-	-	-	-	-	-	-	-	-	-	-	-	-	-	-	10	18	12	39	21	59	113	Ns	t	Fest-Brom, Stel medi	
<i>Androsace maxima</i> L. spp. turczaninovii (Frey) Fed.	-	1	1	-	-	-	-	-	-	-	-	-	-	-	-	-	-	-	-	-	-	-	-	-	-	-	-	-	-	4	2	6	3	7	12	17	Ns	t	Fest-Brom, Stel medi	
<i>Anemone sylvestris</i> L.	-	-	-	-	-	-	-	-	-	-	-	-	-	-	-	-	-	-	-	-	-	-	-	-	-	-	-	-	-	0	0	0	0	1	1	2	Ns ****	hg	Trif-Ger, Gali veri, Fest-Brom	
<i>Anisantha tectorum</i> (L.) Nevski	-	-	-	2	-	-	-	-	-	-	-	-	-	-	-	-	-	-	-	-	-	-	-	-	-	-	-	-	-	1	1	1	1	4	6	7	Ar	Mediterr-Irano-Turmanian	t	Stel medi, Poly-Arte, Gali veri, Robini

	1	2	3	4	5	6	7	8	9	10	11	12	13	14	15	16	17	18	19	20	21	22	23	24	25	26	27	28	29	30	31	32	33	34	35	36	37	38			
<i>Anthemis ruthenica</i> M.Bieb.	1	1	2	1	-	-	-	-	2	-	-	-	-	-	-	-	-	-	-	2	1	-	-	2	1	-	-	-	-	-	5	3	13	3	16	27	38	Ap		t	Fest vagi, Stel medi
<i>Anthemis tinctoria</i> L.	-	-	-	-	2	-	-	-	-	-	-	-	-	-	-	-	-	-	-	-	-	-	-	-	-	-	-	-	-	1	0	2	2	0	2	4	Ha		h	Fest-Brom, Stel medi	
<i>Anthriscus cere- folium</i> (L.) Hoffm.	-	-	-	-	-	-	-	-	-	-	-	1	-	-	-	-	-	-	-	-	-	-	-	-	-	-	-	-	-	1	0	1	0	1	1	1	Ap		t	Robin	
<i>Anthriscus sylvestris</i> (L.) Hoffm.	-	-	-	-	-	-	-	-	-	-	-	-	-	-	-	-	-	-	-	-	-	-	-	-	-	-	-	-	-	0	1	0	1	5	6	11	Ha		h	Quer-Fage, Gali-Urti, Robin	
<i>Arabidopsis thaliana</i> (L.) Heynh.	-	-	-	-	-	-	-	-	-	-	2	2	-	-	-	-	-	-	-	-	-	-	-	-	-	-	-	-	-	2	2	3	3	7	10	15	Ke	sub-Mediterr-Eur-asiatic-(sub-Atlantic)	t	Stel medi	
<i>Arabidopsis toxophylla</i> (M.Bieb.) N.Busch	-	-	-	-	1	-	-	-	-	-	-	-	-	-	-	-	-	-	-	-	-	-	-	-	-	-	-	-	-	4	0	5	0	6	6	7	Ke	sub-Mediterr-Eur-asiatic-(sub-Atlantic)	t	Stel medi	
<i>Arctium minus</i> (Hill) Bernh.	-	-	-	-	-	-	-	-	-	-	-	-	-	-	-	-	-	-	-	-	-	-	-	-	-	-	-	-	-	0	0	0	0	2	2	3	Ap		h	Artemi	
<i>Arctium lappa</i> L.	-	-	-	-	-	-	-	-	-	-	-	-	-	-	-	-	-	-	-	-	-	-	-	-	-	-	-	-	-	0	2	0	1	2	6	11	11	Ap		h	Artemi
<i>Arctium tomentosum</i> Mill.	-	-	-	-	-	-	-	-	-	-	-	-	-	-	-	-	-	-	-	-	-	-	-	-	-	-	-	-	-	0	1	0	1	6	8	9	Ap		h	Artemi	
<i>Arenaria uralensis</i> Pall. ex Spreng.	2	2	2	2	2	1	1	2	2	2	3	2	1	2	3	1	1	1	-	-	1	2	2	2	2	2	2	2	-	-	17	18	30	24	22	70	125	Ha		t	Fest-Brom, Poly-Arte
<i>Aristolochia clematitis</i> L.	-	-	-	-	-	-	-	-	-	-	-	-	-	-	-	-	-	-	-	-	-	-	-	-	-	-	-	-	-	-	1	2	1	2	3	8	15	Ha		g	Moli-Arrh, Sali purp, Fest vagi, Agro int-rep
<i>Armeniaca vulgaris</i> Lam.	-	-	-	-	-	-	-	-	-	-	-	-	-	-	-	-	-	-	-	-	-	-	-	-	-	-	-	-	-	1	2	5	6	11	14	15	Ke	W-Asiatic	mf	Robin	
<i>Artemisia absinthium</i> L.	2	2	2	2	2	1	1	2	2	2	1	1	1	1	1	1	1	1	1	2	1	2	1	2	1	2	1	1	1	1	14	18	17	25	29	104	151	Ar	Irano-Turanian	c	Poly-Arte, Agro int-rep, Artemi
<i>Artemisia austriaca</i> Jacq.	2	2	3	2	2	2	2	2	2	2	1	2	1	2	2	2	2	2	2	2	2	2	2	2	2	2	2	2	2	2	27	29	52	55	29	117	204	Ha		c	Fest-Brom, Fest-Pucc, Poly-Arte, Fest vagi, Agro int-rep
<i>Artemisia marschalliana</i> Spreng.	-	-	-	-	-	-	-	-	-	-	-	-	-	-	-	-	-	-	-	-	-	-	-	-	-	-	-	-	-	2	1	4	3	3	7	15	Ns		c	Fest vagi	
<i>Artemisia pontica</i> L.	-	-	-	-	-	-	-	-	-	-	-	-	-	-	-	-	-	-	-	-	-	-	-	-	-	-	-	-	-	0	1	0	1	5	6	9	Ns		h	Gali veri	
<i>Artemisia scoparia</i> Waldst. et Kit.	-	-	-	-	-	-	-	-	-	-	-	-	-	-	-	-	-	-	-	-	-	-	-	-	-	-	-	-	-	1	1	2	1	2	8	9	Ap		th	Artemi	
<i>Artemisia</i> cfr. <i>taurica</i> Willd.	-	-	-	-	-	-	-	-	-	-	-	-	-	-	-	-	-	-	-	-	-	-	-	-	-	-	-	-	-	0	1	0	1	1	1	1	Ns		c	Fest-Pucc, Fest-Brom	
<i>Artemisia vulgaris</i> L.	-	-	-	-	-	-	-	-	-	-	-	-	-	-	-	-	-	-	-	-	-	-	-	-	-	-	-	-	-	0	2	0	3	16	24	30	Ap		hc	Artemi	
<i>Asclepias syriaca</i> L.	-	-	-	-	-	-	-	-	-	-	-	-	-	-	-	-	-	-	-	-	-	-	-	-	-	-	-	-	-	0	0	0	0	1	1	1	Ke	North American	h	Agro int-rep	
<i>Asparagus officinalis</i> L. aggr.	-	1	1	1	2	-	-	2	1	1	-	2	1	1	1	1	1	1	1	2	1	1	3	2	-	-	-	-	-	12	16	17	19	22	61	87	Ns		g	Gali veri, Fest-Brom	
<i>Asperugo procumbens</i> L.	-	-	-	-	-	-	-	-	-	-	-	-	-	-	-	-	-	-	-	-	-	-	-	-	-	-	-	-	-	0	1	0	1	2	3	3	Ap		t	Artemi	
<i>Asperula cynanchica</i> L.	-	-	-	2	2	-	-	-	-	-	-	2	2	-	-	-	2	3	1	-	-	-	-	-	-	-	-	-	-	1	3	15	20	12	36	62	Ns		h	Fest-Brom	

	1	2	3	4	5	6	7	8	9	10	11	12	13	14	15	16	17	18	19	20	21	22	23	24	25	26	27	28	29	30	31	32	33	34	35	36	37	38		
<i>Asperula montana</i> Waldst. et Kit.	-	-	1	-	-	-	-	-	-	-	2	-	-	-	-	-	-	-	-	-	-	-	-	-	-	-	-	-	-	0	4	0	7	5	7	10	Ns	h	Fest-Brom	
<i>Astragalus asper</i> Jacq.	-	-	-	1	2	-	-	-	-	-	-	-	-	1	2	1	3	-	2	2	1	2	1	1	-	-	-	-	-	7	6	8	12	7	24	32	Ns	h	Fest-Brom	
<i>Astragalus austriacus</i> Jacq.	-	-	-	-	-	-	-	-	-	-	-	-	-	-	-	-	-	-	-	-	-	-	-	-	-	-	-	-	-	1	1	1	1	2	3	3	Ns	h	Fest-Brom	
<i>Astragalus cicer</i> L.	-	-	2	-	-	-	-	-	-	-	-	-	-	-	-	-	-	-	-	-	-	-	-	-	-	-	-	-	0	0	0	0	2	2	3	Ha	h	Fest-Brom, Artemi		
<i>Astragalus corniculatus</i> M.Bieb.	1	1	-	-	1	1	-	-	-	-	-	-	-	-	-	-	-	-	-	-	-	-	-	-	-	-	-	-	3	4	3	4	5	9	9	Ns	h	Fest-Brom		
<i>Astragalus dasyanthus</i> Pall.	1	2	1	1	-	-	-	-	-	-	1	2	-	-	-	-	-	-	-	-	-	-	-	-	-	-	-	-	-	3	4	3	6	5	11	14	Ns (*)	h	Fest-Brom	
<i>Astragalus sulcatus</i> L.	-	-	-	-	-	-	-	-	-	-	-	-	-	-	-	-	-	-	-	-	-	-	-	-	-	-	-	-	0	0	1	3	2	3	4	Ns	h	Fest-Brom		
<i>Asyneuma canescens</i> (Waldst. et Kit.) Griseb. et Schenk	-	-	1	3	-	-	-	-	-	-	-	-	-	-	-	-	-	-	-	-	-	-	-	-	-	-	-	-	0	0	0	0	2	3	6	Ns	h	Fest-Brom		
<i>Atriplex oblongifolia</i> Waldst. & Kit.	-	-	1	1	2	1	2	-	-	-	-	-	-	-	-	-	-	-	-	-	-	-	-	-	-	-	-	-	-	10	14	4	11	20	44	51	Ha	t	Poly-Arte, Stel medi	
<i>Atriplex patula</i> L.	-	-	-	-	-	-	-	-	-	-	-	-	-	-	-	-	-	-	-	-	-	-	-	-	-	-	-	-	0	1	0	1	3	5	6	Ap	t	Stel medi, Robini		
<i>Atriplex sagittata</i> Borkh.	-	-	-	-	-	-	-	-	-	-	-	-	-	-	-	-	-	-	-	-	-	-	-	-	-	-	-	-	1	2	1	2	2	6	8	Ar	Irano-Turanian	t	Stel medi, Artemi	
<i>Atriplex tatarica</i> L.	-	-	-	-	-	-	-	-	-	-	-	-	-	-	-	-	-	-	-	-	-	-	-	-	-	-	-	-	-	1	1	2	3	1	3	6	Ke	Irano-Turanian-C-Asiatic	t	Stel medi, [Poly-Arte], [Fest-Puce]
<i>Avena fatua</i> L.	-	-	-	-	-	-	-	-	-	-	-	-	-	-	-	-	-	-	-	-	-	-	-	-	-	-	-	-	0	0	0	0	2	2	3	Ar	Irano-Turanian	t	Stel medi	
<i>Avena persica</i> Steud.	-	-	-	-	-	-	-	-	-	-	-	-	-	-	-	-	-	-	-	-	-	-	-	-	-	-	-	-	-	0	0	0	0	1	1	1	Ke	Mediterr	t	Stel medi
<i>Ballota nigra</i> L.	2	2	2	3	2	3	-	-	-	-	1	-	-	-	1	-	-	2	2	2	2	2	1	2	3	-	-	2	-	18	34	13	22	25	85	152	Ar	Mediterr	hc	Artemi, Gali-Urti, Robin
<i>Berteroa incana</i> (L.) DC.	1	1	1	1	1	1	-	-	-	-	1	-	-	-	2	1	2	1	1	1	1	1	1	1	1	1	1	1	1	1	15	17	22	23	28	92	118	Ap	th	Artemi, Poly-Arte
<i>Bromopsis inermis</i> (Leyss.) Holub	2	1	1	2	2	-	-	2	2	-	-	-	-	1	2	1	1	1	1	1	2	2	2	1	-	-	-	-	2	2	10	14	16	23	20	67	125	Ha	hg	Gali veri, Moli-Arrh, Fest-Brom, Agro int-rep
<i>Bromopsis riparia</i> (Rehmann) Holub	1	2	1	-	-	-	-	-	-	-	1	-	-	-	2	-	-	-	-	-	-	-	-	-	-	-	-	-	-	1	7	1	11	7	13	18	Ns	g	Fest-Brom	
<i>Bromus hordeaceus</i> L.	-	-	-	-	-	-	-	-	-	-	-	-	-	-	-	-	-	-	-	-	-	-	-	-	-	-	-	-	-	0	0	0	0	1	1	1	Ap	t	Moli-Arrh, Fest vagi	
<i>Bromus japonicus</i> Thunb.	-	-	-	-	-	-	-	-	-	-	1	1	-	-	-	-	-	-	-	-	-	-	-	-	-	-	-	-	-	2	3	2	4	14	22	30	Ha	t	Stel medi, Fest vagi	
<i>Bromus squarrosus</i> L.	-	-	-	1	-	-	-	-	-	-	-	-	-	-	-	-	-	-	-	-	-	-	-	-	-	-	-	-	-	1	1	1	5	7	8	Ar?	Mediterr-continent-Eurasian	t	Poly-Arte, [Fest-Brom], Fest vagi, Stel medi, Agro int-rep	
<i>Buglossoides arven-sis</i> (L.) I.M.Johnst.	2	2	-	2	2	2	1	2	-	-	2	-	-	2	1	-	-	-	-	-	-	-	-	-	-	-	-	-	-	11	18	11	23	62	93	Ar	Mediterr-Irano-Turanian	t	Stel medi, [Poly-Artemi]	
<i>Bunias orientalis</i> L.	-	-	-	-	-	-	-	-	-	-	-	-	-	-	-	-	-	-	-	-	-	-	-	-	-	-	-	-	-	0	0	2	3	5	Ke	W,C-Asiatin	h	Artemi		

	1	2	3	4	5	6	7	8	9	10	11	12	13	14	15	16	17	18	19	20	21	22	23	24	25	26	27	28	29	30	31	32	33	34	35	36	37	38		
<i>Bupleurum rotundifolium</i> L.	-	-	-	-	-	-	-	-	-	-	-	-	-	-	-	-	-	-	-	-	-	-	-	-	-	-	-	-	-	0	0	0	0	3	3	5	Ar	Mediterr-Irano-Turanian	t	Stel medi
<i>Calamagrostis epigeios</i> (L.) Roth	-	-	-	-	-	-	-	-	-	-	-	-	-	-	-	-	-	-	-	-	-	-	-	-	-	-	-	-	-	0	0	0	0	1	1	1	Ha		hg	Agro int-rep, Fest vagi, Moli-Arrh
<i>Camelina microcarpa</i> Andrz.	2	1	1	-	-	2	1	-	1	1	1	1	1	1	1	1	1	1	1	1	1	1	1	1	1	1	1	1	1	1	5	14	18	44	47	Ar?	Mediterr-Turanian	th	Stel medi, [Poly-Artemi]	
<i>Camelina rumelica</i> Velen.	-	-	-	-	-	-	-	-	-	-	-	-	-	-	-	-	-	-	-	-	-	-	-	-	-	-	-	-	-	0	0	1	1	2	2	Ke	Mediterr-Irano-Turanian	t	Stel medi	
<i>Campanula bononiensis</i> L.	-	-	-	-	-	-	-	-	-	-	-	-	-	-	-	2	2	-	-	1	2	-	-	-	-	-	-	-	-	2	2	3	3	5	16	25	Ns		h	Fest-Brom, Trif-Gera
<i>Campanula sibirica</i> L.	-	-	-	-	-	-	-	-	-	-	-	-	-	-	-	-	-	-	-	1	-	-	-	-	-	-	-	-	-	0	0	2	2	3	4	4	Ns		h	Fest-Brom
<i>Cannabis sativa</i> L.	-	-	-	-	-	-	-	-	-	-	-	-	-	-	-	-	-	-	-	-	-	-	-	-	-	-	-	-	-	1	0	1	4	7	7	Ke	E-Asiatic	t	Stel medi, Artemi, [Fest vagi]	
<i>Capsella bursa-pastoris</i> (L.) Medik.	1	1	2	1	-	-	-	-	1	2	2	-	-	-	-	2	2	2	-	1	1	1	1	1	1	1	1	1	1	1	11	15	20	42	56	Ar	unknown origin	th	Stel medi, Plan majo	
<i>Caragana frutex</i> (L.) K.Koch	-	-	-	-	-	-	-	-	-	-	-	-	-	-	-	-	-	-	-	-	-	-	-	-	-	-	-	-	-	2	4	4	4	16	33	Ns		nf	Fest-Brom	
<i>Cardaria draba</i> (L.) Desv.	-	1	2	1	1	2	2	-	2	1	1	2	1	1	2	2	2	2	2	1	2	-	-	-	-	-	-	-	-	13	18	22	75	117	Ke	E-Mediterr	hg	Agro int-rep		
<i>Carduus acanthoides</i> L.	2	1	1	1	2	2	1	1	2	2	1	1	1	1	1	1	1	1	1	1	1	1	1	1	1	1	1	1	2	2	31	30	28	117	163	Ar	sub-Mediterr- sub-Atlantic-European	th	Artemi, Agro int-rep, Fest-Brom	
<i>Carduus hamulosus</i> Ehrh.	-	-	-	-	-	-	-	-	-	-	-	-	-	-	-	-	-	-	-	-	-	-	-	-	-	-	-	-	-	0	0	0	1	1	1	Ap		th	Artemi	
<i>Carduus nutans</i> L.	-	-	-	-	-	-	-	-	-	-	-	-	-	-	-	-	-	-	-	-	-	-	-	-	-	-	-	-	-	0	0	2	2	3	Ar	sub-Atlantic-boreal-European	th	Artemi		
<i>Carduus uncinatus</i> M.Bieb.	-	1	-	1	2	2	-	1	-	-	-	-	-	-	1	-	-	-	-	-	2	-	-	-	-	-	-	-	-	8	12	13	23	28	Ns		th	Fest-Brom		
<i>Carex melanostachya</i> M.Bieb.ex Willd.	-	-	-	-	-	-	-	-	-	-	-	-	-	-	-	2	2	3	3	2	1	-	-	-	-	-	-	-	-	3	4	5	7	19	42	Ns		g	Gali veri, Moli-Arrh, Fest-Brom, Alth off	
<i>Carex praecox</i> Schreb.	2	3	3	2	-	2	-	-	-	3	-	-	-	-	-	-	-	-	-	-	2	3	1	2	3	3	3	-	-	10	21	17	54	129	Ha		hg	Gali veri, Moli-Arrh, Fest-Brom, Fest vagi, Agro int-rep		
<i>Carex stenophylla</i> Wahlenb.	-	-	-	-	-	-	-	-	-	-	2	-	-	-	-	-	-	-	-	-	1	2	-	-	-	-	-	-	-	1	4	7	5	7	11	Ns		g	Fest-Brom	
<i>Carex supina</i> Willd. ex Wahlenb.	-	-	2	-	-	-	-	-	-	-	-	-	-	2	3	1	-	-	-	-	2	-	-	-	-	-	-	-	-	3	6	7	10	18	Ns		hg	Fest-Brom		
<i>Centaurea adpressa</i> Ledeb.	-	-	-	1	2	2	-	-	-	-	1	3	2	2	1	1	2	2	2	2	2	2	2	2	2	2	2	2	1	13	15	18	75	135	Ns		h	Fest-Brom, Fest vagi, Gali veri		
<i>Centaurea apiculata</i> Ledeb.	-	-	-	-	-	-	-	-	-	-	-	-	-	-	-	-	-	-	-	-	1	-	-	-	-	-	-	-	-	0	1	1	1	1	Ns		h	Fest-Brom		
<i>Centaurea diffusa</i> Lam.	-	1	-	-	-	-	1	-	-	-	-	-	-	-	-	-	2	1	-	-	-	-	-	-	-	-	-	-	-	2	3	6	15	17	Ke	E-Mediterr-continent	th	Agro int-rep, Stel medi, Artemi, [Fest vagi]		
<i>Centaurea jacea</i> L.	-	-	-	-	-	-	-	-	-	-	-	-	-	-	-	-	-	-	-	-	-	-	-	-	-	-	-	-	0	0	1	2	2	Ns		h	Moli-Arrh, Gali veri			
<i>Centaurea stereophylla</i> Besser	-	-	-	-	-	3	3	-	1	3	3	2	-	2	2	-	-	-	-	-	-	-	-	-	-	-	-	-	-	4	10	7	20	46	Ns		h	Fest-Brom		

	1	2	3	4	5	6	7	8	9	10	11	12	13	14	15	16	17	18	19	20	21	22	23	24	25	26	27	28	29	30	31	32	33	34	35	36	37	38			
<i>Centaurea substituta</i> Czerep.	-	-	-	-	-	-	-	-	-	-	-	-	-	-	-	-	-	-	-	-	-	-	-	-	-	-	-	-	-	0	0	0	0	1	2	2	Ns		h	Fest-Brom, Gali veri	
<i>Cephalaria uralensis</i> (Murray) Schrad. ex Roem. & Schult.	-	-	-	-	-	-	-	-	-	-	-	-	-	-	-	-	-	-	-	-	-	-	-	-	-	-	-	-	-	0	0	1	2	3	4	4	Ns		h	Fest-Brom	
<i>Cerasus vulgaris</i> L.	-	-	-	-	-	-	-	-	-	-	-	-	-	-	-	-	-	-	-	-	-	-	-	-	-	-	-	-	-	0	0	0	0	1	1	1	Eg	SW-Asiatic	mf	Robin	
<i>Chaerophyllum</i> <i>prescottii</i> DC.	-	-	-	-	-	-	-	-	-	-	-	-	-	-	-	-	-	-	-	-	-	-	-	-	-	-	-	-	-	0	0	0	0	1	1	2	Ha		th	Gali-Urti, Robin	
<i>Chaerophyllum</i> <i>temulum</i> L.	-	-	-	-	-	-	-	-	-	-	-	-	-	-	-	-	-	-	-	-	-	-	-	-	-	-	-	-	-	0	0	0	0	1	1	2	Ha		th	Gali-Urti, Robin, Quer-Fage	
<i>Chaiturus marru-</i> <i>biastrum</i> (L.) Rehb.	-	-	-	-	-	-	-	-	-	-	-	-	-	-	-	-	-	-	-	-	-	-	-	-	-	-	-	-	-	0	0	0	0	1	1	1	Ns		th	Gali-Urti, Moli-Arrh	
<i>Chamaecitysus</i> <i>austriacus</i> (L.) Link	-	-	-	-	-	-	-	-	-	-	-	-	-	-	-	-	-	-	-	-	-	-	-	-	-	-	-	-	-	1	3	1	4	5	14	22	Ns		mf	Fest-Brom, Gali-veri	
<i>Chelidonium majus</i> L.	-	-	-	-	-	-	-	-	-	-	-	-	-	-	-	-	-	-	-	-	-	-	-	-	-	-	-	-	-	0	1	0	2	2	4	7	Ap		h	Robin, Gali-Urti	
<i>Chenopodium album</i> L.	-	-	-	-	-	-	-	-	-	-	-	-	-	-	-	-	-	-	-	-	-	-	-	-	-	-	-	-	-	1	9	13	17	18	25	69	78	Ap		t	Stel medi
<i>Chenopodium</i> <i>hybridum</i> L.	-	-	-	-	-	-	-	-	-	-	-	-	-	-	-	-	-	-	-	-	-	-	-	-	-	-	-	-	-	0	0	0	0	4	6	7	Ar	sub-Mediterr (arch resistencia?)	t	Stel medi	
<i>Chenopodium opuli-</i> <i>folium</i> Schrad. ex DC.	-	-	-	-	-	-	-	-	-	-	-	-	-	-	-	-	-	-	-	-	-	-	-	-	-	-	-	-	-	2	2	2	2	5	11	12	Ar	Mediterr	t	Stel medi	
<i>Chenopodium strictum</i> Roth	-	-	-	-	-	-	-	-	-	-	-	-	-	-	-	-	-	-	-	-	-	-	-	-	-	-	-	-	-	0	1	0	1	3	3	3	Ke	C-Asiatic	t	Stel medi	
<i>Chenopodium x</i> <i>preissmannii</i> J.Murr	-	-	-	-	-	-	-	-	-	-	-	-	-	-	-	-	-	-	-	-	-	-	-	-	-	-	-	-	-	0	0	0	0	1	1	1	Ke	anthropog?	t	Stel medi	
<i>Chondrila juncea</i> L.	-	-	-	-	-	-	-	-	-	-	-	-	-	-	-	-	-	-	-	-	-	-	-	-	-	-	-	-	-	0	0	2	0	12	19	27	Ha		h	Fest vagi, Artemi	
<i>Chondrila latifolia</i> M.Bieb.	-	-	-	-	-	-	-	-	-	-	-	-	-	-	-	-	-	-	-	-	-	-	-	-	-	-	-	-	-	2	3	2	3	2	11	20	26	Ha		h	Fest vagi, Artemi
<i>Chorispora tenella</i> (Pall.) DC.	-	-	-	-	-	-	-	-	-	-	-	-	-	-	-	-	-	-	-	-	-	-	-	-	-	-	-	-	-	0	1	0	1	2	3	6	6	Ke	W-Asiatic	t	Stel medi
<i>Cichorium intybus</i> L.	-	-	-	-	-	-	-	-	-	-	-	-	-	-	-	-	-	-	-	-	-	-	-	-	-	-	-	-	-	0	0	1	1	9	18	24	Ar	Mediterr-Irano-Turanian	h	Artemi, [Poly-Arte], [Gali veri]	
<i>Cirsium arvense</i> (L.) Scop.	-	-	-	-	-	-	-	-	-	-	-	-	-	-	-	-	-	-	-	-	-	-	-	-	-	-	-	-	-	1	4	1	5	23	42	55	Ap		g	Stel medi, Artemi	
<i>Cirsium vulgare</i> (Savi) Ten.	-	-	-	-	-	-	-	-	-	-	-	-	-	-	-	-	-	-	-	-	-	-	-	-	-	-	-	-	-	0	0	0	0	2	2	2	Ap		th	Artemi	
<i>Colutea arborescens</i> L.	-	-	-	-	-	-	-	-	-	-	-	-	-	-	-	-	-	-	-	-	-	-	-	-	-	-	-	-	-	0	0	0	0	2	2	2	Eg	sub-Mediterr-sub-Atlantic-European	mf	Robin	
<i>Conium maculatum</i> L.	-	-	-	-	-	-	-	-	-	-	-	-	-	-	-	-	-	-	-	-	-	-	-	-	-	-	-	-	-	0	0	0	0	12	16	19	Ar	Mediterr-Irano-Turanian	th	Artemi, Stel medi	
<i>Consolida orientalis</i> (J.Gay ex Gren. & Godr.) Schroed.	-	-	-	-	-	-	-	-	-	-	-	-	-	-	-	-	-	-	-	-	-	-	-	-	-	-	-	-	-	0	0	0	0	1	1	1	Ke	Mediterr	t	Stel medi	
<i>Consolida paniculata</i> (Host) Schur	-	-	-	-	-	-	-	-	-	-	-	-	-	-	-	-	-	-	-	-	-	-	-	-	-	-	-	-	-	1	8	14	15	27	83	114	Ap		t	Poly-Arte, Stel medi	

	1	2	3	4	5	6	7	8	9	10	11	12	13	14	15	16	17	18	19	20	21	22	23	24	25	26	27	28	29	30	31	32	33	34	35	36	37	38		
<i>Elytrigia intermedia</i> (Host) Nevski	1	1	-	-	-	2	-	1	3	-	-	-	-	1	1	3	3	-	-	-	2	2	2	-	1	-	-	-	-	-	0	0	7	17	13	33	60	Ha	hg	Gali veri, Fest-Brom, Agro int-rep
<i>Elytrigia x mucronata</i> (Opiz) Prokud.	2	-	-	-	-	-	2	-	-	-	-	-	-	-	-	-	-	-	-	-	-	-	-	2	-	-	-	-	-	2	4	2	4	5	8	17	Ha	hg	Gali veri, Fest-Brom, Agro int-rep	
<i>Elytrigia repens</i> (L.) Nevski	-	2	1	2	2	2	2	2	2	2	2	2	2	2	2	2	2	1	1	1	2	2	2	2	1	1	1	1	2	2	15	28	29	49	29	115	258	Ap	hg	Agro int-rep
<i>Elytrigia stipifolia</i> (Cze-m. ex Nevski) Nevski	-	-	-	-	-	2	-	-	-	-	-	-	-	-	-	-	-	-	-	-	-	-	-	-	-	-	-	-	-	0	0	0	0	2	2	4	Ns (*)	hg	Fest-Brom	
<i>Elytrigia trichophora</i> (Link) Nevski	-	-	-	-	-	-	-	-	-	-	-	-	-	-	-	2	-	-	-	-	-	-	-	-	-	-	-	-	-	0	1	0	2	3	4	6	Ns	hg	Fest-Brom, Gali veri, Agro int-rep	
<i>Eremogone longifolia</i> (M.Bieb.) Fenzl	-	-	-	-	-	-	-	-	-	-	-	-	-	-	-	-	-	-	-	-	1	1	-	-	-	-	-	-	-	1	1	1	0	1	3	3	Ns	h	Fest-Brom	
<i>Erigeron podolicus</i> Besser	-	-	1	-	-	-	-	-	-	-	-	-	-	-	1	-	-	-	-	-	-	-	-	-	-	-	-	-	-	2	1	2	1	13	15	15	Ha	th	Fest vagi, Fest-Brom, Stel medi	
<i>Erodium cyconium</i> (L.) L. Her.	-	-	-	-	-	-	-	-	-	-	-	-	-	-	-	-	-	-	-	-	-	-	-	-	-	-	-	-	-	0	0	0	0	1	1	1	Ha	t	Fest vagi, Stel medi	
<i>Erodium ruthenicum</i> M.Bieb.	-	-	-	-	-	-	-	-	-	-	-	-	-	-	-	-	-	-	-	-	-	1	3	-	-	-	-	-	-	0	1	0	1	5	2	4	7	Ns	h	Fest-Brom, Gali veri
<i>Eryngium campestre</i> L.	1	2	1	1	1	-	-	1	1	-	-	2	2	-	-	-	-	2	2	-	-	-	2	1	-	-	-	-	-	10	9	16	12	14	44	70	Ha	h	Fest-Brom, Poly-Arte	
<i>Erysimum diffusum</i> Ehrh.	-	-	-	1	-	-	-	-	1	2	1	2	-	-	-	-	1	2	1	-	-	-	-	-	-	-	-	-	-	1	6	2	8	6	12	17	Ha	h	Fest-Brom, Poly-Arte	
<i>Erysimum repandum</i> L.	-	-	-	-	-	-	-	-	-	2	1	-	-	-	-	-	-	-	-	-	-	-	-	-	-	-	-	-	-	2	2	3	2	4	11	15	Ar	Irano-Turanian	t	Stel medi
<i>Euonymus europaea</i> L.	-	-	-	-	-	-	-	-	-	-	-	-	-	-	-	-	-	-	-	-	-	-	-	-	-	-	-	-	-	0	0	0	0	2	2	2	Ns	nf	Rham-Prun, Quer-Fage	
<i>Euphorbia agraria</i> M.Bieb.	1	2	2	2	2	1	1	2	2	2	2	2	2	2	2	2	2	2	2	2	2	2	2	2	2	2	2	2	2	2	24	24	45	34	25	103	155	Ha	h	Fest-Brom, Agro int-rep
<i>Euphorbia leptocaula</i> Boiss.	-	-	-	1	2	-	-	-	-	-	-	-	-	-	-	2	-	-	-	-	-	2	-	2	-	-	-	-	-	4	2	8	2	7	7	12	Ns	h	Fest-Brom	
<i>Euphorbia seguieriana</i> Neck.	2	1	-	2	1	2	-	-	-	-	-	-	-	-	-	-	2	2	-	-	-	-	-	-	-	-	-	-	-	7	5	14	6	9	22	35	Ns	h	Fest vagi, Fest-Brom, Poly-Arte	
<i>Euphorbia semivillosa</i> Prokh.	-	-	-	-	-	-	-	-	-	-	-	-	-	-	-	-	-	-	-	-	-	-	-	-	-	-	-	-	-	0	0	0	0	4	7	14	Ns	h	Gali veri, Moli-Arrh, Trif-Gera	
<i>Euphorbia stepposa</i> Zoz ex Prokh.	2	2	2	2	2	2	1	1	2	2	2	2	2	2	2	2	2	1	1	2	2	2	2	2	2	2	2	2	2	2	20	13	33	23	24	74	118	Ns	h	Fest-Brom
<i>Euphorbia virgata</i> Waldst. & Kit.	-	-	2	2	2	2	2	1	2	2	2	2	2	2	2	2	2	2	3	2	2	2	2	2	2	2	2	2	2	2	7	15	10	21	28	79	142	Ha	h	Gali veri, Agro int-rep
<i>Fagopyrum esculentum</i> Moench	-	-	-	-	-	-	-	-	-	-	-	-	-	-	-	-	-	-	-	-	-	-	-	-	-	-	-	-	-	0	0	0	0	1	1	1	Eg	C-Asiatic	t	Stel medi
<i>Falcaria vulgaris</i> Bernh.	2	1	2	2	2	2	2	2	2	2	2	2	2	2	3	2	2	2	2	2	2	2	2	2	2	2	2	2	2	2	28	27	38	47	28	122	241	Ha	h	Fest-Brom, Fest vagi, Gali veri, Agro int-rep
<i>Fallopia convolvulus</i> (L.) A.Löve	-	-	-	1	-	-	-	-	-	-	-	-	-	-	-	-	-	-	-	-	-	-	-	-	-	-	-	-	-	0	2	0	2	12	14	16	Ar	Asiatic	t	Stel medi, Robini
<i>Ferulago galbanifera</i> (Mill.)W.D.J.Koch	-	-	-	-	-	-	-	-	-	-	-	-	-	-	-	-	-	-	-	-	-	-	-	-	-	-	-	-	-	0	1	0	1	2	3	3	Ns	h	Fest-Brom	

	1	2	3	4	5	6	7	8	9	10	11	12	13	14	15	16	17	18	19	20	21	22	23	24	25	26	27	28	29	30	31	32	33	34	35	36	37	38			
<i>Festuca pratensis</i> Huds.	-	-	-	-	-	-	-	-	-	-	-	-	-	-	-	-	-	-	-	-	-	-	-	-	-	-	-	-	-	0	0	0	3	3	4	Ha	hg	Moli-Arrh, Agro int-rep			
<i>Festuca regeliana</i> Pawl.	-	-	-	-	-	-	-	-	-	-	-	-	-	-	-	-	-	-	-	-	-	-	-	-	-	-	-	-	-	0	0	0	3	4	5	Ns	h	Aste trip, Alth offi			
<i>Festuca rupicola</i> Heuff.	-	-	-	2	-	-	-	-	-	-	-	-	-	-	-	-	-	-	-	-	-	-	-	-	-	2	1	-	-	0	2	3	10	16	28	Ns	h	Fest-Brom, Gali veri			
<i>Festuca valesiaca</i> Gaudin	2	3	3	2	2	2	2	2	2	2	2	2	2	2	2	2	2	2	2	2	2	2	2	2	2	2	2	2	2	20	40	65	67	29	113	233	Ns	h	Fest-Brom, Poly-Arte, Gali veri		
<i>Ficaria valthifolia</i> Rchb.	-	-	-	-	-	-	-	-	-	-	-	-	-	-	-	-	-	-	-	-	-	-	-	-	-	-	-	-	-	0	2	2	5	8	Ns	gh	Urti-Samb, Rham-Prun				
<i>Filipendula vulgaris</i> Moench	-	1	2	-	-	-	-	-	-	-	-	-	-	-	-	-	-	-	-	-	-	-	-	-	-	-	-	-	-	0	0	2	3	6	9	Ns	hg	Moli-Arrh, Gali veri			
<i>Fragaria viridis</i> Duchesne	2	1	1	-	-	-	-	-	-	-	-	-	-	-	-	-	-	-	-	-	-	-	-	-	-	-	-	-	-	1	2	2	6	12	22	Ns	hc	Gali veri, Trif-Gera, Fest-Brom			
<i>Fraxinus excelsior</i> L.	-	-	-	-	-	-	-	-	-	-	-	-	-	-	-	-	-	-	-	-	-	-	-	-	-	-	-	-	-	0	0	0	1	1	1	Ns	mf	Sali purp, Robin			
<i>Fraxinus pennsylvanica</i> Marschall	-	-	-	-	-	-	-	-	-	-	-	-	-	-	-	-	-	-	-	-	-	-	-	-	-	-	-	-	-	0	0	3	3	5	6	6	Ke	North American	mf	Robin	
<i>Fumaria schleicheri</i> Soy.-Willem.	-	-	-	-	-	-	-	-	-	-	-	-	-	-	-	-	-	-	-	-	-	-	-	-	-	-	-	-	-	2	2	1	1	3	7	11	Ar	Irano-Turanian	t	Stel medi	
<i>Fumaria vaillantii</i> Loisel.	-	-	-	-	-	-	-	-	-	-	-	-	-	-	-	-	-	-	-	-	-	-	-	-	-	-	-	-	-	4	3	5	10	16	18	Ar	Irano-Turanian	t	Stel medi		
<i>Fumaria</i> sp.	-	-	-	-	-	-	-	-	-	-	-	-	-	-	-	-	-	-	-	-	-	-	-	-	-	-	-	-	-	1	3	1	3	4	8	9	Ar	t	Stel medi		
<i>Gagea erubescens</i> (Besser) Schult. & Schult.f.	-	-	-	-	-	-	-	-	-	-	-	-	-	-	-	-	-	-	-	-	-	-	-	-	-	-	-	-	-	0	0	3	5	7	8	Ns	g	Fest-Brom, Gali veri			
<i>Gagea paczoskii</i> (Zapař.) Grossh.	-	-	-	-	-	-	-	-	-	-	-	-	-	-	-	-	-	-	-	-	-	-	-	-	-	-	-	-	-	5	2	6	10	17	19	Ns	g	Fest-Brom, Gali veri			
<i>Gagea pusilla</i> (F.W.Schmidt) Schult. & Schult.f.	1	1	2	1	2	1	-	-	-	-	-	-	-	-	-	-	-	-	-	-	-	-	-	-	-	-	-	-	-	4	11	7	14	15	21	Ns	g	Fest-Brom, Poly-Arte			
<i>Galatella villosa</i> (L.) Rchb.f.	-	-	-	2	1	-	-	-	-	-	-	-	-	-	-	-	-	-	-	-	-	-	-	-	-	-	-	-	-	3	4	5	6	12	18	Ns	h	Fest-Brom			
<i>Galium aparine</i> L.	2	1	1	2	2	3	-	-	-	-	-	-	-	-	-	-	-	-	-	-	-	-	-	-	-	-	-	-	-	14	19	2	9	25	49	82	Ap	t	Gali-Urti, Robin		
<i>Galium humifusum</i> M.Bieb.	-	-	-	-	-	-	-	-	-	-	-	-	-	-	-	-	-	-	-	-	-	-	-	-	-	-	-	-	-	0	1	0	1	1	1	Ha	h	Gali veri, Artemi, Fest-Brom			
<i>Galium ruthenicum</i> Willd.	-	-	1	-	-	-	-	-	-	-	-	-	-	-	-	-	-	-	-	-	-	-	-	-	-	-	-	-	-	2	1	3	2	6	11	20	Ns	h	Fest-Brom		
<i>Galium spurium</i> L.	-	-	-	-	2	1	2	-	-	-	-	-	-	-	-	-	-	-	-	-	-	-	-	-	-	-	-	-	-	-	2	6	3	11	9	18	29	Ar	Mediterr-Irano-Turanian	t	Stel medi
<i>Galium verum</i> L.	2	3	2	2	2	2	2	2	2	2	2	2	2	2	2	2	2	2	2	2	2	2	2	2	2	2	2	2	2	11	17	28	30	20	71	153	Ns	h	Gali veri		
<i>Galium volhynicum</i> Pobed.	-	1	2	-	2	2	-	-	-	-	-	-	-	-	-	-	-	-	-	-	-	-	-	-	-	-	-	-	-	-	4	6	16	27	45	87	Ns (**)	hg	Fest-Brom		
<i>Geranium sanguineum</i> L.	-	-	-	-	-	-	-	-	-	-	-	-	-	-	-	-	-	-	-	-	-	-	-	-	-	-	-	-	-	0	0	1	2	2	2	Ns	h	Trif-Gera			

	1	2	3	4	5	6	7	8	9	10	11	12	13	14	15	16	17	18	19	20	21	22	23	24	25	26	27	28	29	30	31	32	33	34	35	36	37	38				
<i>Geum urbanum</i> L.	-	-	-	-	-	-	-	-	-	-	-	-	-	-	-	-	-	-	-	-	-	-	-	-	-	-	-	-	-	-	0	0	0	4	4	8	Ha		h	Quer-Fage, Robin		
<i>Glaucium corniculatum</i> (L.) J.Rudolph	-	-	-	-	-	1	-	-	-	-	-	-	-	-	-	-	-	-	-	-	-	-	-	-	1	-	-	-	-	-	1	2	1	2	9	11	11	Ap		t	Fest-Brom, Stel medi	
<i>Glechoma hederacea</i> L.	-	-	-	-	-	-	-	-	-	-	-	-	-	-	-	-	-	-	-	-	-	-	-	-	-	-	-	-	-	-	0	0	0	0	1	1	2	Ha		hc	Glecho, Moli-Arrh, Sali purp	
<i>Goniolimon besseria-num</i> (Schult.) Kusn.	-	-	1	1	-	-	-	-	-	-	-	-	-	-	-	-	-	-	-	-	-	-	-	-	-	-	-	-	-	-	6	6	16	7	13	25	31	Ns		h	Fest-Brom	
<i>Goniolimon tataricum</i> (L.) Boiss.	2	1	-	-	-	-	-	-	-	-	-	-	-	-	-	-	-	-	-	-	-	-	-	-	-	-	-	-	-	-	6	5	9	5	7	16	21	Ns ****		h	Fest-Brom	
<i>Grindelia squarrosa</i> (Pursh) Dunal	-	-	-	-	-	-	-	-	-	-	-	-	-	-	-	-	-	-	-	-	-	-	-	-	-	-	-	-	-	-	2	2	0	1	3	6	7	Ke	North American	ht	Artemi, Stel medi	
<i>Gypsophila paniculata</i> L.	-	-	-	-	-	-	-	-	-	-	-	-	-	-	-	-	-	-	-	-	-	-	-	-	-	-	-	-	-	-	2	3	6	3	5	15	24	Ns		h	Fest vagi, Sedo-Scle	
<i>Helianthus annuus</i> L.	-	-	-	-	-	-	-	-	-	-	-	-	-	-	-	-	-	-	-	-	-	-	-	-	-	-	-	-	-	-	0	0	0	0	3	5	5	Eg	North American	t	Stel medi	
<i>Helichrysum arena-rium</i> (L.) Moench	-	-	-	-	-	-	-	-	-	-	-	-	-	-	-	-	-	-	-	-	-	-	-	-	-	-	-	-	-	-	0	0	5	4	4	9	12	Ns		h	Fest vagi, Fest-Brom, Sedo-Scle	
<i>Heliotropium europaeum</i> L.	-	-	-	-	-	-	-	-	-	-	-	-	-	-	-	-	-	-	-	-	-	-	-	-	-	-	-	-	-	-	0	0	0	0	1	1	1	Ap		t	Stel medi	
<i>Heracleum sibiricum</i> L.	-	-	-	-	-	-	-	-	-	-	-	-	-	-	-	-	-	-	-	-	-	-	-	-	-	-	-	-	-	-	0	0	0	0	3	4	6	Ha		th	Moli-Arrh, Sali purp, Artemi	
<i>Herniaria besseri</i> Fisch. ex Hornem.	-	1	1	-	-	-	-	-	-	-	-	-	-	-	-	-	-	-	-	-	-	-	-	-	-	-	-	-	-	-	2	2	10	10	14	25	27	Ns		c	Fest-Brom	
<i>Herniaria glabra</i> L.	-	-	-	-	-	-	-	-	-	-	-	-	-	-	-	-	-	-	-	-	-	-	-	-	-	-	-	-	-	-	-	0	0	1	0	1	1	1	Ha		t	Fest vagi, Stel medi
<i>Hesperis tristis</i> L.	1	1	-	-	-	-	-	-	-	-	-	-	-	-	-	-	-	-	-	-	-	-	-	-	-	-	-	-	-	-	1	3	1	3	7	13	16	Ns ****		th	Fest-Brom	
<i>Hieracium echinoides</i> Lumn.	2	2	2	1	-	-	-	-	-	-	-	-	-	-	-	-	-	-	-	-	-	-	-	-	-	-	-	-	-	-	6	6	11	9	9	26	45	Ns		h	Fest-Brom, Fest vagi, Sedo-Scle	
<i>Hieracium virosum</i> Pall.	-	-	-	-	-	-	-	-	-	-	-	-	-	-	-	-	-	-	-	-	-	-	-	-	-	-	-	-	-	-	0	0	0	0	4	4	4	Ns		h	Fest-Brom	
<i>Hierochloë repens</i> (Host) P.Beauv.	-	-	-	-	-	-	-	-	-	-	-	-	-	-	-	-	-	-	-	-	-	-	-	-	-	-	-	-	-	-	0	0	0	0	1	1	2	Ns		h	Gali veri	
<i>Holosteum umbellatum</i> L.	2	2	2	2	2	-	-	-	-	-	-	-	-	-	-	-	-	-	-	-	-	-	-	-	-	-	-	-	-	-	8	11	28	15	19	14	42	76	Ha		t	Fest-Brom, Fest vagi, Poly-Arte, Stel medi, Crit-Limo
<i>Humulus lupulus</i> L.	-	-	-	-	-	-	-	-	-	-	-	-	-	-	-	-	-	-	-	-	-	-	-	-	-	-	-	-	-	-	-	0	0	0	0	2	2	4	Ha		h	Gali-Urti, Rham-Prun
<i>Hylotelephium polo-nicum</i> (Blocki) Holub	-	-	-	-	-	-	-	-	-	-	-	-	-	-	-	-	-	-	-	-	-	-	-	-	-	-	-	-	-	-	-	9	10	15	14	11	34	57	Ns		h	Fest-Brom
<i>Hyoscyamus niger</i> L.	-	-	-	-	-	-	-	-	-	-	-	-	-	-	-	-	-	-	-	-	-	-	-	-	-	-	-	-	-	-	-	7	10	7	10	26	56	61	Ar	Irano-Turanian	th	Stel medi, Artemi
<i>Hypericum elegans</i> Stephan ex Willd.	1	1	-	-	-	-	-	-	-	-	-	-	-	-	-	-	-	-	-	-	-	-	-	-	-	-	-	-	-	-	8	17	10	17	23	57	67	Ns		h	Fest-Brom, Gali veri	
<i>Hypericum perforatum</i> L.	-	-	-	-	-	-	-	-	-	-	-	-	-	-	-	-	-	-	-	-	-	-	-	-	-	-	-	-	-	-	-	3	6	7	19	35	48	Ha		h	Gali veri	

	1	2	3	4	5	6	7	8	9	10	11	12	13	14	15	16	17	18	19	20	21	22	23	24	25	26	27	28	29	30	31	32	33	34	35	36	37	38				
<i>Inula britannica</i> L.	-	-	-	-	-	-	-	-	-	-	-	2	-	-	-	-	-	-	2	-	-	-	-	-	-	-	-	-	-	1	2	1	3	8	12	16	<i>Ha</i>		h	Gali veri, Moli-Arrh		
<i>Inula germanica</i> L.	-	-	-	-	-	-	-	-	-	-	1	-	-	-	-	1	1	-	-	-	3	1	-	-	-	-	-	-	-	-	3	2	5	6	5	10	16	<i>Ns</i>		h	Fest-Brom, Gali veri	
<i>Inula oculus-christi</i> L.	-	-	-	-	-	-	-	-	-	-	-	-	-	-	-	2	-	-	-	-	-	-	-	-	-	-	-	-	-	0	1	0	2	1	2	3	<i>Ns</i>		h	Fest-Brom, Gali veri		
<i>Iris halophila</i> Pall.	-	-	-	-	-	-	-	-	-	1	2	-	-	-	-	-	-	1	-	2	2	-	-	-	-	-	-	-	-	3	2	4	4	4	11	16	<i>Ns</i> ****		g	Fest-Brom, Fest-Puce		
<i>Iris pumila</i> L.	1	1	1	1	1	1	1	1	1	1	1	1	2	2	1	1	1	1	2	2	1	1	1	1	1	1	1	1	1	1	1	1	1	1	1	1	<i>Ns</i>		g	Fest-Brom		
<i>Iva xanthiifolia</i> Nutt.	-	-	-	-	-	-	-	-	-	-	-	-	-	-	-	-	-	-	-	-	-	-	-	-	-	-	-	-	-	2	2	2	2	17	26	27	<i>Ke</i>	North American	t	Stel medi, Artemi		
<i>Jurinea multiflora</i> (L.) B.Fedtsch.	-	-	-	-	-	-	-	-	-	-	-	-	-	-	-	-	-	-	-	-	-	-	-	-	-	-	-	-	-	1	2	2	3	2	5	8	<i>Ns</i>		h	Fest-Brom		
<i>Knautia arvensis</i> (L.) Koult.	-	-	-	-	-	-	-	-	-	-	-	-	-	-	-	-	-	1	1	1	1	1	1	1	1	1	1	1	1	1	1	1	1	1	1	1	<i>Ha</i>		h	Moli-Arrh, TriF-Gera		
<i>Kochia prostrata</i> (L.) Schrud.	2	2	2	2	2	2	2	2	2	2	2	2	2	2	2	2	2	2	2	2	2	2	2	2	2	2	2	2	2	2	2	2	2	2	2	2	<i>Ns</i>		c	Fest-Brom, Crit-Stat		
<i>Kochia scoparia</i> (L.) Schrad.	-	-	-	-	-	-	-	-	-	-	-	-	-	-	-	-	-	-	-	-	-	-	-	-	-	-	-	-	-	-	0	0	1	1	1	<i>Ke</i>	Middle-Asiatic	t	Stel medi			
<i>Koeleria cristata</i> (L.) Pers.	2	3	3	2	2	2	2	2	2	2	2	2	2	2	2	2	2	2	2	2	2	2	2	2	2	2	2	2	2	2	2	2	2	2	2	2	<i>Ns</i>		h	Fest-Brom		
<i>Kohlruschia prolifera</i> (L.) Kunth	-	-	-	-	-	-	-	-	-	-	-	-	-	-	-	-	-	-	-	-	-	-	-	-	-	-	-	-	-	-	0	0	0	0	1	1	1	<i>Ns</i>		t	Fest-Brom, Poly-Arte	
<i>Lactuca quercina</i> L.	-	-	-	-	-	-	-	-	-	-	-	-	-	-	-	-	-	-	-	-	-	-	-	-	-	-	-	-	-	-	0	1	1	3	4	<i>Ns</i>		th	Quer pub-pet, Quer-Fage, Rham-Prun,			
<i>Lactuca serriola</i> L.	1	1	1	2	1	2	1	2	1	1	1	2	1	1	2	2	2	2	1	1	1	1	1	1	1	1	1	1	1	1	1	1	1	1	1	1	<i>Ar</i>	Mediterr-Irano-Turanian	th	Artemi, Stel medi		
<i>Lactuca tatarica</i> (L.) C.A.Mey.	-	-	-	-	-	-	-	-	-	-	-	-	-	-	-	-	-	-	-	-	-	-	-	-	-	-	-	-	-	-	0	0	2	2	2	<i>Ap</i>		hg	Agro int-rep, Caki mari, Ammoph, Crit-Stat,			
<i>Lamium amplexicaule</i> L.	1	2	2	2	2	2	2	2	2	2	1	2	2	2	2	2	2	2	2	2	2	2	2	2	2	2	2	2	2	2	2	2	2	2	2	<i>Ar</i>	Mediterr-Irano-Turanian	t	Stel medi, [Poly-Arte], [Fest-Brom]			
<i>Lamium purpureum</i> L.	-	-	-	-	-	-	-	-	-	-	-	-	-	-	-	-	-	-	-	-	-	-	-	-	-	-	-	-	-	-	0	0	2	2	3	<i>Ar</i>	NE-Mediterr	th	Stel medi, Bident			
<i>Lappula patula</i> (Lehm.) Menyh.	-	-	-	-	-	-	-	-	-	-	-	-	-	-	-	-	-	-	-	-	-	-	-	-	-	-	-	-	-	-	0	1	1	1	1	<i>Ke?</i>	Middle- & C-Asiatic	th	Stel medi, [Fest-Brom]			
<i>Lappula squarrosa</i> (Retz.) Dumort.	-	-	-	-	-	-	-	-	-	-	-	-	-	-	-	-	-	-	-	-	-	-	-	-	-	-	-	-	-	-	0	9	9	19	38	46	<i>Ar?</i>	sub-Mediterr-sub-continent-Eurasian	th	Stel medi, Artemi, [Fest-Brom]		
<i>Lathyrus pratensis</i> L.	-	-	-	-	-	-	-	-	-	-	-	-	-	-	-	-	-	-	-	-	-	-	-	-	-	-	-	-	-	-	0	0	1	1	2	<i>Ha</i>		hg	Moli-Arrh			
<i>Lathyrus tuberosus</i> L.	-	-	-	-	-	-	-	-	-	-	-	-	-	-	-	-	-	-	-	-	-	-	-	-	-	-	-	-	-	-	-	3	15	23	23	26	68	121	<i>Ar</i>	Irano-Turanian	hg	Stel medi, Gali-veri, Agr int-rep, [TriF-Gera], [Fest- Brom]
<i>Lavatera thuringiaca</i> L.	2	2	2	2	2	2	2	2	2	2	2	2	2	2	2	2	2	2	2	2	2	2	2	2	2	2	2	2	2	2	2	2	2	2	2	<i>Ns</i>		h	Gali veri, Fest-Brom			
<i>Leonurus glaucescens</i> Bunge	-	-	-	-	-	-	-	-	-	-	-	-	-	-	-	-	-	-	-	-	-	-	-	-	-	-	-	-	-	-	2	4	11	25	34	<i>Ha</i>		h	Artemi			

	1	2	3	4	5	6	7	8	9	10	11	12	13	14	15	16	17	18	19	20	21	22	23	24	25	26	27	28	29	30	31	32	33	34	35	36	37	38			
Schur	-	1	1	2	1	-	1	2	-	2	1	1	-	2	3	-	-	-	2	-	2	-	2	-	-	-	-	-	-	-	11	14	17	22	21	70	113	Ns		hg	
<i>Melilotus albus</i> Medik.	-	-	-	-	-	-	-	-	-	-	-	-	-	-	-	-	-	-	-	-	-	-	-	-	-	-	-	-	-	-	0	0	1	5	4	5	7	Ap		th	Artemi
<i>Melilotus officinalis</i> (L.) Pall.	-	-	-	-	-	-	-	-	-	-	-	-	-	-	-	-	-	-	-	-	-	-	-	-	-	-	-	-	-	5	6	12	14	23	62	71	Ap		th	Artemi	
<i>Meniocus linifolius</i> (Stephan ex Willd.) DC.	-	-	-	-	-	-	-	-	-	-	-	-	-	-	-	-	-	-	-	-	-	-	-	-	-	-	-	-	-	0	0	1	0	1	2	3	Ns		t	Fest-Brom	
<i>Morus alba</i> L.	-	-	-	-	-	-	-	-	-	-	-	-	-	-	-	-	-	-	-	-	-	-	-	-	-	-	-	-	-	0	0	0	0	2	3	4	Ke	E-Asiatic	mf	Robin	
<i>Muscari neglectum</i> Guss. ex Ten.	-	-	-	-	-	-	-	-	-	-	-	-	-	-	-	-	-	-	-	-	-	-	-	-	-	-	-	-	-	0	0	1	2	4	7	Ns		g	Fest-Pucc, Gali veri, Fest-Brom		
<i>Myosotis micrantha</i> Pall. ex Lehm.	-	-	-	-	-	-	-	-	-	-	-	-	-	-	-	-	-	-	-	-	-	-	-	-	-	-	-	-	-	0	0	3	3	3	5	Ha		t	Fest vagi, Fest-Brom, Poly-Arte		
<i>Myosoton aquaticum</i> (L.) Moench	-	-	-	-	-	-	-	-	-	-	-	-	-	-	-	-	-	-	-	-	-	-	-	-	-	-	-	-	-	0	0	0	0	1	1	1	Ha		gh	Bident, Sali purp, Alne glut	
<i>Nepeta cataria</i> L.	-	-	-	-	-	-	-	-	-	-	-	-	-	-	-	-	-	-	-	-	-	-	-	-	-	-	-	-	-	0	0	0	0	2	2	2	Ar	E-Mediterr	ch	Artemi, Uri-Samb, Rham-Prun	
<i>Nepeta pannonica</i> L.	-	-	-	-	-	-	-	-	-	-	-	-	-	-	-	-	-	-	-	-	-	-	-	-	-	-	-	-	-	0	0	2	6	6	16	31	Ns		ch	Fest-Brom, Gali-veri	
<i>Nepeta parviflora</i> M.Bieb.	-	-	-	-	-	-	-	-	-	-	-	-	-	-	-	-	-	-	-	-	-	-	-	-	-	-	-	-	-	3	2	5	3	6	8	11	Ns		h	Fest-Brom	
<i>Nigella arvensis</i> L.	2	1	-	-	-	-	-	-	-	-	-	-	-	-	-	-	-	-	-	-	-	-	-	-	-	-	-	-	-	8	5	21	6	16	37	53	Ar	Balkan-W-Asiatic	t	Stiel medi, [Fest-Brom]	
<i>Nonea rossica</i> Steven	-	-	-	-	-	-	-	-	-	-	-	-	-	-	-	-	-	-	-	-	-	-	-	-	-	-	-	-	-	3	3	6	15	41	48	Ha		h	Fest-Brom, Artemi		
<i>Oberna cserei</i> (Baumg.) Ikonn.	-	-	-	-	-	-	-	-	-	-	-	-	-	-	-	-	-	-	-	-	-	-	-	-	-	-	-	-	-	2	1	2	1	6	9	10	Ha		h	Fest-Brom, Artemi	
<i>Onobrychis vicifolia</i> Scop.	-	-	-	-	-	-	-	-	-	-	-	-	-	-	-	-	-	-	-	-	-	-	-	-	-	-	-	-	-	0	0	0	1	2	3	Ke	Mediterr-Irano-Turanian	h	Trif-Gera, Moli-Arrh, Stiel medi		
<i>Onopordum acanthium</i> L.	-	-	-	-	-	-	-	-	-	-	-	-	-	-	-	-	-	-	-	-	-	-	-	-	-	-	-	-	-	4	6	20	24	48	50	Ar	Mediterr-Irano-Turanian	h	Artemi		
<i>Ornithogalum kochii</i> Parl.	-	-	-	-	-	-	-	-	-	-	-	-	-	-	-	-	-	-	-	-	-	-	-	-	-	-	-	-	-	2	4	2	5	6	8	9	Ns ****		g	Fest-Brom	
<i>Otites densiflorum</i> (D'Urv.) Grossh. aggr.	3	2	2	2	1	1	1	-	-	-	-	-	-	-	-	-	-	-	-	-	-	-	-	-	-	-	-	-	-	12	10	16	12	16	40	54	Ns		h	Fest vagi, Fest-Brom, Poly-Arte	
<i>Otites hellmannii</i> (Claus) Klokov	-	-	-	-	-	-	-	-	-	-	-	-	-	-	-	-	-	-	-	-	-	-	-	-	-	-	-	-	-	0	0	1	1	2	2	Ns		h	Fest-Brom		
<i>Oxytropis pilosa</i> (L.) DC.	-	-	-	-	-	-	-	-	-	-	-	-	-	-	-	-	-	-	-	-	-	-	-	-	-	-	-	-	-	4	8	4	13	10	18	25	Ns		h	Fest-Brom	
<i>Panicum miliaceum</i> L.	-	-	-	-	-	-	-	-	-	-	-	-	-	-	-	-	-	-	-	-	-	-	-	-	-	-	-	-	-	0	0	1	3	4	4	Ke	C-Asiatic	t	Stiel medi		
<i>Papaver dubium</i> L.	-	-	-	-	-	-	-	-	-	-	-	-	-	-	-	-	-	-	-	-	-	-	-	-	-	-	-	-	-	0	0	0	6	7	7	Ar	Mediterr-Irano-Turanian	t	Stiel medi		

	1	2	3	4	5	6	7	8	9	10	11	12	13	14	15	16	17	18	19	20	21	22	23	24	25	26	27	28	29	30	31	32	33	34	35	36	37	38		
<i>Polygonum arenastrum</i> Boreau	-	-	-	-	-	-	-	-	-	-	-	-	-	-	-	-	-	-	-	-	-	-	-	-	-	-	-	-	-	0	0	0	3	3	3	Ap	t	Poly-Arte, Plan majo		
<i>Polygonum bellardii</i> All. s.str.	-	-	-	-	-	-	-	-	-	-	-	-	-	-	-	-	-	-	-	-	-	-	-	-	-	-	-	-	-	0	0	0	1	1	1	Ha	t	Fest vagi, Artemi		
<i>Polygonum neglectum</i> Besser	-	-	-	-	-	-	-	-	-	-	-	-	-	-	-	-	-	-	-	-	-	-	-	-	-	-	-	-	-	0	0	0	1	1	1	Ap	t	Poly-Arte, Plan majo		
<i>Polygonum patulum</i> M.Bieb.	-	-	-	-	-	-	-	-	-	-	-	-	-	-	-	-	-	-	-	-	-	-	-	-	-	-	-	-	-	3	2	1	4	8	9	Ha	t	Fest-Brom, Poly-Arte, Artemi		
<i>Potentilla argentea</i> L.	1	1	1	1	1	1	1	1	1	1	1	1	1	1	1	1	1	1	1	1	1	1	1	1	1	1	1	1	1	1	1	1	1	1	1	1	h	Gali veri, Fest vagi, Fest-Brom, Artemi, Sedo-Scle		
<i>Potentilla astrachanica</i> Jacq.	-	-	-	-	-	-	-	-	-	-	-	-	-	-	-	-	-	-	-	-	-	-	-	-	-	-	-	-	-	0	0	0	1	1	1	Ns	h	Fest-Brom		
<i>Potentilla heptaphylla</i> L.	-	2	-	-	-	-	-	-	-	-	-	-	-	-	-	-	-	-	-	-	-	-	-	-	-	-	-	-	-	0	0	2	1	1	2	Ns	h	Fest-Brom		
<i>Potentilla laciniosa</i> Kit. ex Nestl.	-	-	1	2	1	1	1	1	1	1	1	1	1	1	1	1	1	1	1	1	1	1	1	1	1	1	1	1	1	1	1	1	1	1	1	1	h	Fest-Brom		
<i>Potentilla neglecta</i> Baumg.	-	-	-	-	-	-	-	-	-	-	-	-	-	-	-	-	-	-	-	-	-	-	-	-	-	-	-	-	-	3	0	3	0	10	13	13	Ha	h	Fest-Brom, Artemi	
<i>Potentilla recta</i> L.	1	1	2	2	1	1	1	1	1	1	1	1	1	1	1	1	1	1	1	1	1	1	1	1	1	1	1	1	1	1	1	1	1	1	1	1	h	Fest-Brom		
<i>Prunus divaricata</i> Ledeb.	-	-	-	-	-	-	-	-	-	-	-	-	-	-	-	-	-	-	-	-	-	-	-	-	-	-	-	-	-	0	0	0	0	2	2	4	Ke	SW-Asiatic, Caucasian	nf	Robin
<i>Prunus domestica</i> L.	-	-	-	-	-	-	-	-	-	-	-	-	-	-	-	-	-	-	-	-	-	-	-	-	-	-	-	-	-	0	0	0	3	3	3	Eg	SW-Asiatic, Caucasian	mf	Robin	
<i>Prunus cerasifera</i> Ehrh.	-	-	-	-	-	-	-	-	-	-	-	-	-	-	-	-	-	-	-	-	-	-	-	-	-	-	-	-	-	0	0	0	1	1	1	Ke	SW-Asiatic, Caucasian	nf	Robin	
<i>Prunus stepposa</i> Kotov	-	1	2	1	1	1	1	1	1	1	1	1	1	1	1	1	1	1	1	1	1	1	1	1	1	1	1	1	1	1	1	1	1	1	1	1	1	nf	Rham-Prun	
<i>Pyrus communis</i> L.	-	-	-	-	-	-	-	-	-	-	-	-	-	-	-	-	-	-	-	-	-	-	-	-	-	-	-	-	-	0	0	0	4	5	6	Ae		mf	Robin, [Quer-Fage]	
<i>Ranunculus oxyspermus</i> Willd.	-	-	-	-	-	-	-	-	-	-	-	-	-	-	-	-	-	-	-	-	-	-	-	-	-	-	-	-	-	0	0	0	1	1	1	Ns	hg	Fest-Brom		
<i>Ranunculus polyanthemus</i> L.	-	-	-	-	-	-	-	-	-	-	-	-	-	-	-	-	-	-	-	-	-	-	-	-	-	-	-	-	-	0	0	0	2	2	3	Ns	hg	Gali veri, Fest-Brom		
<i>Ranunculus scythicus</i> Klokov	-	1	1	1	1	1	1	1	1	1	1	1	1	1	1	1	1	1	1	1	1	1	1	1	1	1	1	1	1	1	1	1	1	1	1	1	1	gh	Fest-Brom	
<i>Rapistrum perenne</i> (L.) All.	-	-	-	-	-	-	-	-	-	-	-	-	-	-	-	-	-	-	-	-	-	-	-	-	-	-	-	-	-	11	12	12	15	22	70	104	Ke	Mediterr	h	Artemi
<i>Reseda lutea</i> L.	-	-	-	-	-	-	-	-	-	-	-	-	-	-	-	-	-	-	-	-	-	-	-	-	-	-	-	-	-	7	5	7	4	20	50	53	Ke	Mediterr	th	Stiel medi, Artemi, Agro int-rep
<i>Rhamnus cathartica</i> L.	-	-	-	-	-	-	-	-	-	-	-	-	-	-	-	-	-	-	-	-	-	-	-	-	-	-	-	-	-	2	2	2	2	9	20	24	Ns		nf	Rham-Prun
<i>Robinia pseudoacacia</i> L.	-	-	-	-	-	-	-	-	-	-	-	-	-	-	-	-	-	-	-	-	-	-	-	-	-	-	-	-	-	1	4	3	10	16		Ke	North American	mf	Robin	
<i>Rosa canina</i> L.	-	-	-	-	-	-	-	-	-	-	-	-	-	-	-	-	-	-	-	-	-	-	-	-	-	-	-	-	-	0	0	0	3	6	6	Ns		nf	Rham-Prun, Quer pub-pe	

	1	2	3	4	5	6	7	8	9	10	11	12	13	14	15	16	17	18	19	20	21	22	23	24	25	26	27	28	29	30	31	32	33	34	35	36	37	38			
<i>Rosa uncinella</i> Besser	-	-	-	-	-	-	-	-	-	-	-	-	-	-	-	-	-	-	-	-	-	-	-	-	-	-	-	-	-	0	0	0	0	1	1	1	Ns		nf	Rham-Prun	
<i>Rosa villosa</i> L.	-	-	-	-	-	-	-	-	-	-	-	-	-	-	-	-	-	-	-	-	-	-	-	-	-	-	-	-	-	0	0	0	0	1	1	1	Ns		nf	Rham-Prun	
<i>Rosa</i> sp.	-	-	-	-	-	-	-	-	-	-	-	-	-	-	-	-	-	-	-	-	-	-	-	-	-	-	-	-	-	1	2	13	2	17	28	33	Ns		nf	Rham-Prun	
<i>Rubus caesius</i> L.	-	-	-	-	-	-	-	-	-	-	-	-	-	-	-	-	-	-	-	-	-	-	-	-	-	-	-	-	-	0	0	0	0	2	4	6	Ns		nf	Sali purp, Gali-Urti, Artemi	
<i>Rumex confertus</i> Willd.	-	-	-	-	-	-	-	-	-	-	-	-	-	-	-	-	-	-	-	-	-	-	-	-	-	-	-	-	-	0	0	0	0	1	1	1	Ha		h	Moli-Arrh, Artemi	
<i>Rumex crispus</i> L.	-	-	-	-	-	-	-	-	-	-	-	-	-	-	-	-	-	-	-	-	-	-	-	-	-	-	-	-	-	0	0	0	0	1	1	1	Ap		h	Moli-Arrh, Artemi	
<i>Rumex patientia</i> L.	-	1	1	1	2	2	-	-	-	-	-	-	2	2	1	2	2	-	-	1	1	2	2	2	-	-	-	-	-	12	20	6	13	21	65	87	Ke	ES-Mediterr-continent	h	Artemi	
<i>Rumex thysiflorus</i> Fingerh.	-	-	-	-	-	-	-	-	-	-	-	-	-	-	-	-	-	-	-	-	-	-	-	-	-	-	-	-	-	0	0	0	0	1	1	1	Ha		h	Moli-Arrh, Artemi	
<i>Salsola tragus</i> L.	-	-	-	-	-	-	-	-	-	-	-	-	-	-	-	-	-	-	-	-	-	-	-	-	-	-	-	-	-	0	0	0	0	1	1	1	Ap		t	Stel medi, Cakti mari	
<i>Salvia aethiopsis</i> L.	-	-	-	-	-	1	1	-	-	-	-	-	-	-	-	-	-	-	-	-	-	-	-	-	-	-	-	-	-	3	1	3	1	7	11	11	Ns		h	Fest-Brom, Artemi	
<i>Salvia austriaca</i> Jacq.	2	1	1	2	-	-	-	-	-	-	-	-	2	1	-	-	-	-	-	-	-	-	-	-	-	-	-	-	-	2	6	4	1	6	7	12	15	Ns		h	Fest-Brom
<i>Salvia nemorosa</i> L.	2	2	2	2	2	3	2	2	1	3	3	2	3	2	2	2	2	2	2	2	2	2	2	2	2	3	2	2	2	22	27	56	34	29	129	256	Ns		h	Fest-Brom, Agro int-rep	
<i>Salvia verticillata</i> L.	-	-	-	-	-	-	-	-	-	-	-	-	-	-	-	-	-	-	-	-	-	-	-	-	-	-	-	-	-	0	0	0	0	1	2	3	Ha		hg	Fest-Brom, Gali veri, Agro int-rep	
<i>Sambucus nigra</i> L.	-	-	-	-	-	-	-	-	-	-	-	-	-	-	-	-	-	-	-	-	-	-	-	-	-	-	-	-	-	0	1	0	1	8	13	19	Ap		nf	Urti-Samb, Robini	
<i>Scabiosa ochroleuca</i> L.	-	-	-	-	-	-	-	-	-	-	-	-	-	-	-	-	-	-	-	-	-	-	-	-	-	-	-	-	-	0	0	2	6	6	15	20	Ha		h	Fest-Brom	
<i>Scilla bifolia</i> L.	-	-	-	-	-	-	-	-	-	-	-	-	-	-	-	-	-	-	-	-	-	-	-	-	-	-	-	-	-	0	1	0	2	1	3	5	Ns		g	Quer-Fage, Rham-Prun	
<i>Senecio erucifolius</i> L.	1	1	1	2	1	1	2	-	1	2	1	1	1	1	1	1	1	1	1	1	1	1	1	1	1	1	1	1	1	6	15	20	6	25	84	117	Ha		h	Fest-Brom, Gali veri, Artemi	
<i>Senecio vernalis</i> Waldst. & Kit.	2	2	2	1	2	2	1	1	2	2	1	1	1	1	1	1	1	1	1	1	1	1	1	1	1	1	1	1	1	12	19	12	16	14	56	77	Ap		th	Stel medi, Fest vagi	
<i>Serratula radiata</i> (Waldst. et Kit.) M.Bieb.	-	-	-	-	-	-	-	-	-	-	-	-	-	-	-	-	-	-	-	-	-	-	-	-	-	-	-	-	-	0	2	3	5	3	7	13	Ns		h	Fest-Brom	
<i>Seseli tortuosum</i> L.	1	1	2	-	-	-	-	-	-	-	1	-	-	-	-	2	-	2	-	-	-	-	1	-	-	-	-	-	-	9	15	28	12	23	77	112	Ns		h	Fest-Brom, Fest vagi, Poly-Arte	
<i>Setaria glauca</i> (L.) P.Beauv.	-	-	-	-	-	-	-	-	-	-	-	-	-	-	-	-	-	-	-	-	-	-	-	-	-	-	-	-	0	2	0	2	5	8	9	Ar	Indian-Malay	t	Stel medi		
<i>Setaria viridis</i> (L.) P.Beauv.	-	-	-	-	-	-	-	-	-	-	-	-	-	-	-	-	-	-	-	-	-	-	-	-	-	-	-	-	0	0	0	0	5	5	5	Ar	Mediterr-Irano-Turanian	t	Stel medi		
<i>Sideritis montana</i> L.	-	-	-	-	-	-	-	-	-	-	-	-	-	-	-	-	2	1	-	-	-	-	-	-	-	-	-	-	-	1	3	2	3	7	13	14	Ha		t	Fest-Brom, Stel medi	

	1	2	3	4	5	6	7	8	9	10	11	12	13	14	15	16	17	18	19	20	21	22	23	24	25	26	27	28	29	30	31	32	33	34	35	36	37	38			
<i>Silaum silaus</i> (L.) Schinz et Thell.	-	-	-	-	-	-	-	-	-	-	-	-	-	-	-	-	-	-	-	-	-	-	-	-	-	-	-	-	-	2	1	2	1	2	3	3	Ns	h	Fest-Brom, Gali veri, Alth offi		
<i>Silene bupleuroides</i> L.	-	-	-	2	1	-	-	-	-	-	-	-	-	-	-	-	-	-	-	-	-	-	-	-	-	-	-	-	-	-	5	3	6	6	15	19	Ns	h	Fest-Brom		
<i>Silene dichotoma</i> Ehrh.	-	-	-	-	-	-	-	-	-	-	-	-	-	-	-	-	-	-	-	-	-	-	-	-	-	-	-	-	-	-	0	0	0	0	1	2	2	Ap	th	Stel medi, Fest-Brom	
<i>Sinapis arvensis</i> L.	-	-	-	-	-	-	-	-	-	-	-	-	-	-	-	-	-	-	-	-	-	-	-	-	-	-	-	-	-	-	0	3	0	3	20	29	34	Ar	t	Stel medi	
<i>Sisymbrium altissimum</i> L.	-	-	-	-	-	-	-	-	-	-	-	-	-	-	-	-	-	-	-	-	-	-	-	-	-	-	-	-	-	-	1	0	1	0	2	2	2	Ap	th	Stel medi	
<i>Sisymbrium loeselii</i> L.	-	1	2	1	2	2	2	2	2	1	3	2	2	1	1	1	1	1	1	2	-	-	-	-	-	-	-	-	-	-	22	34	20	22	27	86	114	Ar?	th	Eurasiotic-continent	
<i>Sisymbrium polymorphum</i> (Murray) Roth	-	-	-	-	-	-	-	-	-	-	-	-	-	-	-	-	-	-	-	-	-	-	-	-	-	-	-	-	-	-	6	6	8	8	17	16	49	81	Ns	th	Fest-Brom
<i>Solanum dulcamara</i> L.	-	-	-	-	-	-	-	-	-	-	-	-	-	-	-	-	-	-	-	-	-	-	-	-	-	-	-	-	-	-	0	0	0	0	1	1	1	Ha	nf	Sali purp, Alne glut, Gali-Urti, Artemi	
<i>Solanum nigrum</i> L.	-	-	-	-	-	-	-	-	-	-	-	-	-	-	-	-	-	-	-	-	-	-	-	-	-	-	-	-	-	-	0	0	0	0	3	3	3	Ar	t	Stel medi	
<i>Sonchus arvensis</i> L.	-	-	-	-	-	-	-	-	-	-	-	-	-	-	-	-	-	-	-	-	-	-	-	-	-	-	-	-	-	-	0	0	0	0	3	3	3	Ar?	h	Stel medi	
<i>Sonchus asper</i> (L.) Hill	-	-	-	-	-	-	-	-	-	-	-	-	-	-	-	-	-	-	-	-	-	-	-	-	-	-	-	-	-	-	2	2	0	0	10	13	13	Ar	t	Stel medi	
<i>Sonchus oleraceus</i> L.	-	-	-	-	-	-	-	-	-	-	-	-	-	-	-	-	-	-	-	-	-	-	-	-	-	-	-	-	-	-	0	0	0	0	1	2	2	Ar	th	Stel medi	
<i>Stachys annua</i> (L.) L.	-	-	-	-	-	-	-	-	-	-	-	-	-	-	-	-	-	-	-	-	-	-	-	-	-	-	-	-	-	-	0	0	0	0	5	6	7	Ar	t	Stel medi	
<i>Stachys recta</i> L.	-	1	1	1	2	2	2	2	2	1	2	2	2	2	2	2	2	2	2	2	2	2	2	2	2	2	2	2	2	2	18	18	26	31	24	80	135	Ns	h	Fest-Brom, Gali veri	
<i>Stellaria graminea</i> L.	-	-	-	-	-	-	-	-	-	-	-	-	-	-	-	-	-	-	-	-	-	-	-	-	-	-	-	-	-	-	0	0	0	0	1	1	2	Ap	h	Moli-Arrh, Gali veri, Agro int-rep	
<i>Stipa capillata</i> L.	-	2	2	2	2	2	3	1	1	2	2	2	3	1	2	2	2	2	2	2	2	2	2	2	2	2	2	2	2	2	25	25	55	50	27	90	159	Ns (***)	h	Fest-Brom	
<i>Stipa lessingiana</i> Trin. & Rupr.	-	2	-	-	1	1	3	2	-	-	2	1	-	-	2	2	2	2	2	2	2	2	2	2	2	2	2	2	2	9	9	18	13	11	25	39	Ns (***)	h	Fest-Brom		
<i>Swida sanguinea</i> (L.) Opiz	-	-	-	-	-	-	-	-	-	-	-	-	-	-	-	-	-	-	-	-	-	-	-	-	-	-	-	-	-	-	0	0	0	0	2	2	3	Ns	nf	Rham-Prun	
<i>Tanacetum millefolium</i> (L.) Tzvelev	-	2	2	1	2	2	-	-	-	-	2	3	-	-	-	-	-	-	-	-	-	-	-	-	-	-	-	-	-	-	3	5	6	10	6	13	25	Ns	hg	Fest-Brom	
<i>Tanacetum vulgare</i> L.	-	-	-	-	2	2	-	-	-	-	-	-	-	-	-	-	-	-	-	-	-	-	-	-	-	-	-	-	-	-	1	2	2	3	11	17	26	Ha	h	Moli-Arrh, Gali veri, Artemi	
<i>Taraxacum erythrospermum</i> Andrz.	-	-	-	1	-	-	-	-	-	-	-	-	-	-	-	-	-	-	-	-	-	-	-	-	-	-	-	-	-	-	1	6	3	7	9	12	18	Ns	h	Fest-Brom, Poly-Arte	
<i>Taraxacum officinale</i> Wigg.	-	-	-	-	-	-	-	-	-	-	-	-	-	-	-	-	-	-	-	-	-	-	-	-	-	-	-	-	-	-	2	4	2	4	16	31	41	Ap	h	Plan majo	
<i>Taraxacum serotinum</i> (Waldst. & Kit.) Poir.	1	-	-	-	-	-	-	-	-	-	-	-	-	-	-	-	-	-	-	-	-	-	-	-	-	-	-	-	-	-	5	7	8	7	16	33	40	Ha	h	Fest-Brom, Poly-Arte	

	1	2	3	4	5	6	7	8	9	10	11	12	13	14	15	16	17	18	19	20	21	22	23	24	25	26	27	28	29	30	31	32	33	34	35	36	37	38			
<i>Teucrium chamaedrys</i> L.	-	-	-	-	-	-	-	-	-	-	-	-	-	-	-	-	-	-	-	2	2	-	-	-	-	-	-	-	-	5	1	1	2	2	5	8	14	Ns		h	Fest-Brom, Trif-Gera, Quer pub-pet
<i>Teucrium polium</i> L.	-	-	-	-	-	-	-	-	-	-	-	2	2	-	-	-	-	-	-	-	-	-	-	-	-	-	-	-	-	1	1	2	2	1	3	6	Ns		c	Fest-Brom, Fest vagi	
<i>Thalictrum minus</i> L. aggr.	-	2	1	1	-	-	-	-	-	-	-	-	-	2	2	-	-	-	-	1	1	1	1	1	1	1	1	1	1	1	5	12	7	17	16	50	96	Ns		h	Fest-Brom, Gali veri, Trif-Gera
<i>Thesium arvense</i> Horv.	-	-	-	-	-	-	-	-	-	-	-	-	-	-	-	-	-	-	-	-	-	-	-	-	-	-	-	-	-	-	-	-	-	-	-	-	-	-	-	h	Fest-Brom, Poly-Arte
<i>Thlaspi arvense</i> L.	-	-	-	-	-	-	-	-	-	-	-	-	-	-	-	-	-	-	-	-	-	-	-	-	-	-	-	-	-	-	-	-	-	-	-	-	-	-	-	th	Stel medi
<i>Thlaspi perfoliatum</i> L.	1	1	-	2	2	2	2	2	2	2	2	2	2	2	2	2	2	2	2	2	2	2	2	2	2	2	2	2	2	2	7	7	10	9	18	41	67	Ke	Mediterr	th	Stel medi
<i>Thymus dimorphus</i> Klokov & Des.-Shost.	-	1	-	-	-	-	-	-	-	-	-	-	-	-	-	-	-	-	-	-	-	-	-	-	-	-	-	-	-	-	-	-	-	-	-	-	-	-	-	c	Fest-Brom, Fest vagi
<i>Thymus marschallianus</i> Willd.	2	2	1	-	-	-	-	-	-	-	-	-	-	-	-	-	-	-	-	-	-	-	-	-	-	-	-	-	-	-	-	-	-	-	-	-	-	-	-	c	Fest-Brom
<i>Tilia europaea</i> L.	-	-	-	-	-	-	-	-	-	-	-	-	-	-	-	-	-	-	-	-	-	-	-	-	-	-	-	-	-	-	-	-	-	-	-	-	-	-	-	mf	Quer-Fage
<i>Torilis japonica</i> (Houtt.) DC.	-	-	-	-	-	-	-	-	-	-	-	-	-	-	-	-	-	-	-	-	-	-	-	-	-	-	-	-	-	-	-	-	-	-	-	-	-	-	-	th	Artemi
<i>Tragopogon major</i> Jacq.	1	1	1	1	1	1	1	1	1	1	1	1	1	1	1	1	1	1	1	1	1	1	1	1	1	1	1	1	1	9	12	9	8	12	20	59	61	Ap		h	Fest-Brom, Artemi
<i>Tragopogon podolicus</i> (DC.) Artemez.	-	-	-	-	-	-	-	-	-	-	-	-	-	-	-	-	-	-	-	-	-	-	-	-	-	-	-	-	-	-	-	-	-	-	-	-	-	-	-	h	Fest-Brom
<i>Trifolium alpestre</i> L.	-	-	-	-	-	-	-	-	-	-	-	-	-	-	-	-	-	-	-	-	-	-	-	-	-	-	-	-	-	-	-	-	-	-	-	-	-	-	-	h	Trif-Gera, Fest-Brom
<i>Trifolium arvense</i> L.	-	1	2	1	-	-	-	-	-	-	-	-	-	-	-	-	-	-	-	-	-	-	-	-	-	-	-	-	-	-	-	-	-	-	-	-	-	-	-	t	Fest-Brom, Fest vagi, Gali veri, Poly-Arte, Sedo-Scle
<i>Trifolium medium</i> L.	-	-	-	-	-	-	-	-	-	-	-	-	-	-	-	-	-	-	-	-	-	-	-	-	-	-	-	-	-	-	-	-	-	-	-	-	-	-	-	h	Trif-Gera, Fest-Brom
<i>Trifolium pratense</i> L.	-	-	-	-	-	-	-	-	-	-	-	-	-	-	-	-	-	-	-	-	-	-	-	-	-	-	-	-	-	-	-	-	-	-	-	-	-	-	-	h	Moli-Arrh
<i>Trigonella monspeliaca</i> L.	-	-	1	-	-	-	-	-	-	-	-	-	-	-	-	-	-	-	-	-	-	-	-	-	-	-	-	-	-	-	-	-	-	-	-	-	-	-	-	t	Fest-Brom, Poly-Arte
<i>Tripleurospermum inodorum</i> (L.) Sch.Bip.	-	-	-	-	-	-	-	-	-	-	-	-	-	-	-	-	-	-	-	-	-	-	-	-	-	-	-	-	-	-	-	-	-	-	-	-	-	-	-	t	Stel medi
<i>Triticum durum</i> Desf.	-	-	-	-	-	-	-	-	-	-	-	-	-	-	-	-	-	-	-	-	-	-	-	-	-	-	-	-	-	-	-	-	-	-	-	-	-	-	-	t	Stel medi
<i>Turritis glabra</i> L.	-	-	-	-	-	-	-	-	-	-	-	-	-	-	-	-	-	-	-	-	-	-	-	-	-	-	-	-	-	-	-	-	-	-	-	-	-	-	-	th	Fest-Brom, Rham-Prun
<i>Ulmus minor</i> Mill.	-	-	-	-	-	-	-	-	-	-	-	-	-	-	-	-	-	-	-	-	-	-	-	-	-	-	-	-	-	-	-	-	-	-	-	-	-	-	-	mf	Quer-Fage, Sali purp, Robin
<i>Ulmus pumila</i> L.	-	-	-	-	-	-	-	-	-	-	-	-	-	-	-	-	-	-	-	-	-	-	-	-	-	-	-	-	-	-	-	-	-	-	-	-	-	-	-	nf	Robin
<i>Urtica dioica</i> L.	-	-	-	-	-	-	-	-	-	-	-	-	-	-	-	-	-	-	-	-	-	-	-	-	-	-	-	-	-	-	-	-	-	-	-	-	-	-	-	h	Gali-Urti, Robini, Artemi

	1	2	3	4	5	6	7	8	9	10	11	12	13	14	15	16	17	18	19	20	21	22	23	24	25	26	27	28	29	30	31	32	33	34	35	36	37	38						
<i>Urtica urens</i> L.	-	-	-	-	-	-	-	-	-	-	-	-	-	-	-	-	-	-	-	-	-	-	-	-	-	-	-	-	-	0	0	0	0	1	1	1	Ar	Mediterr	t	Stel-medi, Gali-Urti, Robini				
<i>Valeriana tuberosa</i> L.	-	-	-	-	-	-	-	-	-	-	-	-	-	-	-	-	-	-	-	-	-	-	-	-	-	-	-	-	-	0	0	0	0	1	1	1	Ns		g	Fest-Brom				
<i>Valeriana officinalis</i> L.	-	-	-	-	-	-	-	-	-	-	-	-	-	-	-	-	-	-	-	-	-	-	-	-	-	-	-	-	-	1	2	2	3	3	6	10	Ns		g	Moli-Arrh				
<i>Valerianella carinata</i> Loisel.	-	-	-	-	-	-	-	-	-	-	-	-	-	-	-	-	-	-	-	-	-	-	-	-	-	-	-	-	-	0	0	0	0	1	2	3	4	Ha		t	Fest vagi, Fest-Brom, Stel medi			
<i>Verbascum austriacum</i> Schott ex Roem. & Schult.	2	2	2	2	1	1	1	1	1	1	1	1	1	1	1	1	1	1	1	1	1	1	1	1	1	1	1	1	1	1	1	1	1	1	1	1	1	1	1	1	h	Gali veri		
<i>Verbascum x ignescens</i> Tausch	-	-	-	-	-	-	-	-	-	-	-	-	-	-	-	-	-	-	-	-	-	-	-	-	-	-	-	-	-	-	0	0	0	0	3	3	3	3	Ns		h	Fest-Brom		
<i>Verbascum lychnitis</i> L.	2	2	2	2	1	1	1	1	1	1	1	1	1	1	1	1	1	1	1	1	1	1	1	1	1	1	1	1	1	1	1	1	1	1	1	1	1	1	1	1	h	Gali veri, Fest-Brom, Trif-Gera, Fest vagi, Artemi		
<i>Verbascum phlomoides</i> L.	-	-	-	-	-	-	-	-	-	-	-	-	-	-	-	-	-	-	-	-	-	-	-	-	-	-	-	-	-	-	2	2	2	2	4	4	4	4	Ha		h	Artemi		
<i>Verbascum phoeniceum</i> L.	-	-	-	-	-	-	-	-	-	-	-	-	-	-	-	-	-	-	-	-	-	-	-	-	-	-	-	-	-	-	2	2	2	2	2	2	2	2	Ns		h	Fest-Brom, Fest vagi		
<i>Veronica arvensis</i> L.	-	-	-	-	-	-	-	-	-	-	-	-	-	-	-	-	-	-	-	-	-	-	-	-	-	-	-	-	-	-	4	4	4	4	5	5	5	5	Ar	Mediterr-Irano-Turanian	th	Stel medi, [Fest-Brom], [Poly-Arte]		
<i>Veronica austriaca</i> L.	-	-	-	-	-	-	-	-	-	-	-	-	-	-	-	-	-	-	-	-	-	-	-	-	-	-	-	-	-	-	2	2	2	2	2	2	2	2	Ns		c	Fest-Brom		
<i>Veronica longifolia</i> L.	-	-	-	-	-	-	-	-	-	-	-	-	-	-	-	-	-	-	-	-	-	-	-	-	-	-	-	-	-	-	0	0	0	0	1	2	2	2	Ns		h	Moli-Arrh		
<i>Veronica polita</i> Fr.	-	-	-	-	-	-	-	-	-	-	-	-	-	-	-	-	-	-	-	-	-	-	-	-	-	-	-	-	-	-	0	0	0	0	2	2	2	2	Ar	Mediterr-Irano-Turanian	t	Stel medi		
<i>Veronica praecox</i> All.	1	1	1	1	1	1	1	1	1	1	1	1	1	1	1	1	1	1	1	1	1	1	1	1	1	1	1	1	1	1	1	1	1	1	1	1	1	1	1	1	1	1	th	Sedo-Scle, Fest vagi, Fest-Brom, Stel medi
<i>Veronica prostrata</i> L.	1	1	1	1	1	1	1	1	1	1	1	1	1	1	1	1	1	1	1	1	1	1	1	1	1	1	1	1	1	1	1	1	1	1	1	1	1	1	1	1	1	1	c	Fest-Brom
<i>Veronica spicata</i> L. ssp. <i>barrelieri</i> (Schott) Murb.	2	2	2	2	1	1	1	1	1	1	1	1	1	1	1	1	1	1	1	1	1	1	1	1	1	1	1	1	1	1	1	1	1	1	1	1	1	1	1	1	1	1	h	Fest-Brom, Gali veri
<i>Veronica spuria</i> L.	-	-	-	-	-	-	-	-	-	-	-	-	-	-	-	-	-	-	-	-	-	-	-	-	-	-	-	-	-	-	4	4	4	4	5	5	5	5	Ns		h	Fest-Brom, Trif-Gera		
<i>Veronica teucrium</i> L.	-	-	-	-	-	-	-	-	-	-	-	-	-	-	-	-	-	-	-	-	-	-	-	-	-	-	-	-	-	-	3	3	3	3	4	4	4	4	Ns		ch	Fest-Brom, Moli-Arrh		
<i>Veronica triphyllos</i> L.	-	-	-	-	-	-	-	-	-	-	-	-	-	-	-	-	-	-	-	-	-	-	-	-	-	-	-	-	-	-	6	6	6	6	10	10	10	10	Ar	sub-Mediterr-sub-Atlantic-European	t	Stel medi		
<i>Veronica verna</i> L.	1	1	1	1	1	1	1	1	1	1	1	1	1	1	1	1	1	1	1	1	1	1	1	1	1	1	1	1	1	1	1	1	1	1	1	1	1	1	1	1	1	1	t	Fest-Brom, Fest vagi, Poly-Arte
<i>Vicia angustifolia</i> Reichard	-	-	-	-	-	-	-	-	-	-	-	-	-	-	-	-	-	-	-	-	-	-	-	-	-	-	-	-	-	-	0	0	0	0	1	1	1	1	Ke?	Mediterr?	t	Stel medi		
<i>Vicia lathyroides</i> L.	-	-	-	-	-	-	-	-	-	-	-	-	-	-	-	-	-	-	-	-	-	-	-	-	-	-	-	-	-	-	0	0	0	0	1	1	1	1	Ns		th	Fest-Brom, Fest vagi		
<i>Vicia sativa</i> L.	-	-	-	-	-	-	-	-	-	-	-	-	-	-	-	-	-	-	-	-	-	-	-	-	-	-	-	-	-	-	0	0	0	0	3	3	3	3	Eg	Mediterr (?)	t	Artemi, Stel medi		

